



**THE FUN FOODS
THAT BRING THEM
TOGETHER.
ALL IN ONE PLACE.**

YOUR COMPLETE GUIDE TO POTATOES & APPETIZERS



TABLE OF CONTENTS

Welcome to McCain Foods	<u>4–5</u>
Overview of Products	<u>6–7</u>
Potatoes	
How to Select the Right Potato	<u>9–10</u>
Battered & Coated Fries	<u>11–13</u>
Chips, Roasted and Mashed Potatoes	<u>14–15</u>
Classic Uncoated Fries	<u>16–18</u>
Formed Potatoes and Specialty Shapes	<u>19–20</u>
Seasoned & Flavored Fries and Wedges	<u>21–22</u>
Sweet Potatoes	<u>23</u>
Appetizer Potatoes	<u>24</u>
Appetizers	
How to Select the Right Appetizer	<u>26–27</u>
Narrowing Your Selection	<u>28</u>
Appetizer Brand Overview	<u>29–30</u>
Cheese	<u>31–34</u>
Onions	<u>35–38</u>
Peppers	<u>39–40</u>
Vegetables	<u>41–43</u>
Specialty	<u>44</u>
True Beer Food App	<u>45</u>
Product Specs	<u>46–53</u>

WELCOME TO McCain Foods

WELCOME TO MCCAIN FOODS



TOP TO BOTTOM:

McCain® Harvest Splendor® Sweet Potato Regular Fries 3/8" XL (MCF03725)

Moore's® Bakeables® 1/2" Breaded Onion Rings 4X2.5 LB (40003495)

Brew City® IPA Beer Battered Gouda & Mozzarella Cheese Bites 4X3 LB (1000006814)



THERE'S SOMETHING ABOUT FOOD THAT BRINGS PEOPLE TOGETHER. TO BRING CUSTOMERS TO YOUR PLACE, IT'S IMPORTANT TO HAVE THE RIGHT MIX.

In this guide, you'll find shareable, craveable potatoes and appetizers that reflect your guests' ever-changing tastes as well as serve your needs in a growing business.

Explore the winning options we have provided in the following pages. As guests turn to you for great food and good times, you can look to McCain Foods as a partner committed to helping satisfy them.



Wallace and Harrison
Founders

Little did they know, in 1957, the McCain brothers were founding what would one day become the world's largest manufacturer of frozen potatoes and a leading supplier of frozen appetizers.

OVERVIEW OF PRODUCTS



- - - P O T A T O E S - - -

As you watch guests enjoy their meals, chances are, the first thing they reach for is the potato. And since first impressions count, it's important for your potatoes to be the best. In the McCain Foods portfolio, you'll find fries and potato products with a multitude of features, including solutions for specific needs like plate coverage and long-lasting crispness.





- - A P P E T I Z E R S - -

Guests are constantly looking for new experiences. From trending favorites like cheese curds and pickle fries to classic, versatile crowd-pleasers like onion rings and Jalapeño Poppers, McCain Foods appetizer products make it easy to offer a whole menu of inspiring starters, sides, entrées and more that bring guests in and bring them back.





POTATOES

FROM FRIES AND TOTS TO SHREDS AND MASHED, HERE YOU'LL
FIND ALL THINGS POTATO, ALL THE WAYS YOU NEED THEM.

HOW TO SELECT THE RIGHT POTATO



Given the large spectrum of cuts, coatings and seasonings, selecting the right potato may seem challenging. To make it easier, think about the performance attributes your operation requires most—like heat retention or long-lasting crispness. Look for the icons below throughout the guide to help identify the products you need.

CLEAR COAT

- Natural appearance and invisible coating



LIGHT BATTER

- Subtle visible texture



HEAVY BATTER

- Heavy-textured visible batter



LONG-LASTING CRISPNESS

Coated or Battered Fries

Coatings and batters provide a crispy bite and keep fries crispier longer.



PLATE COVERAGE

Longer Lengths

Longer-length fries take up more space on the plate with less product, resulting in better plate coverage.

Thinner Cuts

Thinner cuts “nest” better on the plate for the appearance of more fries with less product.



HEAT RETENTION

Thicker Cuts

Thicker cuts have a larger surface area and mass that retain heat longer.



MENU DIFFERENTIATION

Seasonings

Seasoned and flavored potatoes provide unique options that can work across the menu.

Specialty Cuts

Alternative potato shapes provide visual distinction and appeal.





POTATOES | BATTERED & COATED FRIES

POTATOES | BATTERED & COATED FRIES

THE CONSUMER-PREFERRED CLEAR COAT

McCain® SureCrisp™ Fries are consumer preferred for crispness and taste over other clear-coated fries after 20 minutes of holding or after 30 minutes of delivery. A great multi-use choice for both your dining room and delivery orders.*

*Claims based on McCain Proprietary Quantitative Consumer Research, conducted by a 3rd party in October 2018. Consumers tested were 18-54 years old in four cities in CA, IL, NY and TX who consider themselves regular users of fries in restaurants. Products tested were 3/8" (cooked measurement) straight cut fries for both McCain® SureCrisp™ and nationally branded clear coat competitors in a blind tasting. All items were prepared in accordance with manufacturer cooking instructions. Testing scenarios were 5 minutes out of a fryer, 20 minutes off heat on a plate, and 30 minutes off heat in a delivery setting (product in a fry sleeve, placed in a paper bag and then inside of a closed insulated bag). Conditions for actual delivery vary by delivery driver protocol, distance and climate.

BURGER POUTINE: Crispy classic-cut fries layered with traditional burger ingredients like chopped hamburger, lettuce, tomatoes, cheddar cheese and special sauce.
McCain® SureCrisp™ Skin-On Regular Fries 3/8" PXL (MCF03787)

Invisible coatings and visible batters provide a satisfying bite and keep guests' fries crispier longer.



Clear Coated

A natural appearance and an invisible coating that maintains crispness at the table or out for delivery.

McCain® SureCrisp™ Skin-On Julienne Fries 3/16" XL



Homestyle, skin-on, julienne-cut fries with a crispy taste you can enjoy from the first bite to the last.

Code	MCF05073
Length	XL
Cut Size	3/16"
Skin-On	Yes
Case Pack	6/5 lb.



McCain® SureCrisp™ Shoestring Fries 1/4" + PXL



Shoestring fries with a crispy taste you can enjoy from the first bite to the last.

Code	MCF03789
Length	PXL
Cut Size	1/4" +
Skin-On	No
Case Pack	6/5 lb.



McCain® SureCrisp™ Shoestring Fries 1/4" PXL

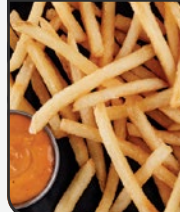


Shoestring fries with a crispy taste you can enjoy from the first bite to the last.

Code	MCF03786
Length	PXL
Cut Size	1/4"
Skin-On	No
Case Pack	6/5 lb.



McCain® SureCrisp™ Skin-On Shoestring Fries 1/4" PXL



Homestyle, skin-on, shoestring fries with a crispy taste you can enjoy from the first bite to the last.

Code	100000709
Length	PXL
Cut Size	1/4"
Skin-On	Yes
Case Pack	6/5 lb.



McCain® SureCrisp™ Thin Fries 5/16" + PXL



Thin-cut fries with a crispy taste you can enjoy from the first bite to the last.

Code	MCF03785
Length	PXL
Cut Size	5/16" +
Skin-On	No
Case Pack	6/5 lb.



McCain® SureCrisp™ Thin Fries 5/16" PXL

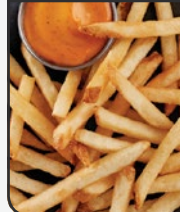


Thin-cut fries with a crispy taste you can enjoy from the first bite to the last.

Code	MCF03790
Length	PXL
Cut Size	5/16"
Skin-On	No
Case Pack	6/5 lb.



McCain® SureCrisp™ Skin-On Thin Fries 5/16" PXL



Homestyle, skin-on, thin-cut fries with a crispy taste you can enjoy from the first bite to the last.

Code	MCF03791
Length	PXL
Cut Size	5/16"
Skin-On	Yes
Case Pack	6/5 lb.



McCain® SureCrisp™ Skin-On Waffle Fries



Homestyle, skin-on waffle fries with a crispy taste you can enjoy from the first bite to the last.

Code	1000001354
Length	NA
Cut Size	Waffle
Skin-On	Yes
Case Pack	6/4.5 lb.



McCain® SureCrisp™ Regular Crinkle Fries 3/8" PXL



Crinkle-cut fries with a crispy taste you can enjoy from the first bite to the last.

Code	MCF03783
Length	PXL
Cut Size	3/8"
Skin-On	No
Case Pack	6/5 lb.



McCain® SureCrisp™ Regular Fries 3/8" PXL



Classic fries with a crispy taste you can enjoy from the first bite to the last.

Code	MCF03788
Length	PXL
Cut Size	3/8"
Skin-On	No
Case Pack	6/5 lb.



McCain® SureCrisp™ Skin-On Regular Fries 3/8" PXL



Homestyle, skin-on fries with a crispy taste you can enjoy from the first bite to the last.

Code	MCF03787
Length	PXL
Cut Size	3/8"
Skin-On	Yes
Case Pack	6/5 lb.



MENU DIFFERENTIATION PLATE COVERAGE HEAT RETENTION LONG-LASTING CRISPNESS

BAKE-CONVENTIONAL BAKE-CONVECTION DEEP FRY GRIDDLE STOVETOP STEAMER MICROWAVE K-12

SECRET SAUCE FRIES: Shoestring fries take on a nostalgic note with a drizzle of old-fashioned Thousand Island dressing, a generous mound of sauerkraut, rich, melted Swiss cheese and chopped herbs.
McCain® Extra Crispy Shoestring Fries 1/4" L (1000004508)



Light Battered

A light batter, subtle visible texture and exceptional crispness.

McCain Ultimate® Crispy Coated Skin-On Julienne Fries 3/16" XL

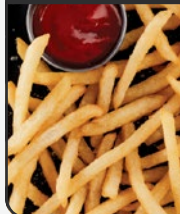


Skin-on julienne fries coated in a light batter for an addictively crisp french fry experience.

Code	100000723
Length	XL
Cut Size	3/16"
Skin-On	Yes
Case Pack	6/5 lb.



Ore-Ida® EverCrisp® Shoestring Fries 1/4" XL



These shoestring-cut fries are coated in a light, buttery batter for better crispness and flavor.

Code	01F01027A
Length	XL
Cut Size	1/4"
Skin-On	No
Case Pack	6/5 lb.



McCain Ultimate® Crispy Coated Skin-On Spiral Fries



Skin-on, spiral-cut fries with a light, buttery batter locking in the robust flavor and maximizing crispness.

Code	MCX89
Length	NA
Cut Size	Spiral
Skin-On	Yes
Case Pack	6/4 lb.



McCain Ultimate® Crispy Coated Skin-On Thin Fries 5/16" XL



Skin-on, thin-cut fries coated in a light, buttery batter for crunchy texture and homemade, fresh taste.

Code	MCX121
Length	XL
Cut Size	5/16"
Skin-On	Yes
Case Pack	6/5 lb.



Ore-Ida® EverCrisp® Thin Regular Fries 5/16" X 3/8" XL



Classic-cut, thin fries coated in a light, buttery batter that provides an exceptionally crispy texture and taste.

Code	01F01028A
Length	XL
Cut Size	5/16" X 3/8"
Skin-On	No
Case Pack	6/5 lb.



McCain Ultimate® Crispy Coated Skin-On Waffle Fries



Skin-on, waffle-cut fries coated in a light, buttery batter to seal in the robust flavor and maximize crispness.

Code	MCX239
Length	NA
Cut Size	Waffle
Skin-On	Yes
Case Pack	6/4.5 lb.



McCain® Bakeable Regular Crinkle Fries 3/8" L



Crinkle-cut with a crispy outside and a tender interior full of delicious potato goodness.

Code	MCF03761
Length	L
Cut Size	3/8"
Skin-On	No
Case Pack	6/5 lb.



McCain® Bakeable Regular Fries 3/8" XL

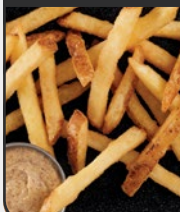


The picture-perfect fry that pops to mind when you get a craving. Crispy outside, with a tender interior.

Code	MCF03762
Length	XL
Cut Size	3/8"
Skin-On	No
Case Pack	6/5 lb.



McCain Ultimate® Crispy Coated Skin-On Regular Fries 3/8" XL



Skin-on, traditional fries coated in a light, buttery batter to seal in the robust flavor and maximize crispness.

Code	MCX49
Length	XL
Cut Size	3/8"
Skin-On	Yes
Case Pack	6/5 lb.



McCain Ultimate® Crispy Coated Skin-On Thin 10-Cut Wedges



Thin-cut, skin-on potato wedges coated in a buttery batter for exceptional potato flavor and a crisp, crunchy texture.

Code	MCX91
Length	NA
Cut Size	10-Cut Wedge
Skin-On	Yes
Case Pack	6/5 lb.



Heavy Battered

A heavy-textured visible batter providing a hearty, long-lasting crunch ideal for takeout and delivery use.

McCain® Extra Crispy Shoestring Fries 1/4" L

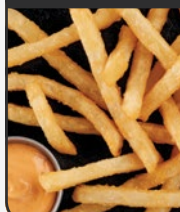


Crispy shoestring fries with a buttery taste and hearty texture for maximum crunch.

Code	1000004508
Length	L
Cut Size	1/4"
Skin-On	No
Case Pack	6/5 lb.



McCain® Extra Crispy Regular Fries 3/8" L



Crispy fries with a buttery taste and hearty texture for maximum crunch.

Code	1000001223
Length	L
Cut Size	3/8"
Skin-On	No
Case Pack	6/5 lb.



MENU DIFFERENTIATION
 PLATE COVERAGE
 HEAT RETENTION
 LONG-LASTING CRISPNESS
 BAKE-CONVENTIONAL
 BAKE-CONVECTION
 DEEP FRY
 GRIDDLE
 STOVETOP
 STEAMER
 MICROWAVE
 K-12

POTATOES | CHIPS, ROASTED AND MASHED POTATOES

BACON MAC AND CHEESE CHIPS WITH BBQ CHICKEN: Crunchy cooked potato chips topped with house-made macaroni and cheese, crumbled bacon and sliced jalapeños. Paired with a house-smoked BBQ chicken leg and breast.
McCain® Fresh-Style Skin-On Ridge Chips (MCX244)

Save time and labor while offering a classic potato alternative to fries.



Fresh-Style Flat & Ridge Chips

Fresh-style chips that offer authentic made-from-scratch taste.

McCain® Fresh-Style Skin-On Flat Chips



Finely sliced potatoes, crisped until irresistibly golden in color with a freshness you won't soon forget.

Code	MCX05006
Length	NA
Cut Size	Flat Chip
Skin-On	Yes
Case Pack	6/4 lb.



McCain® Fresh-Style Skin-On Ridge Chips



Ridge-cut, finely sliced potatoes, crisped until irresistibly golden in color with a freshness you won't forget.

Code	MCX244
Length	NA
Cut Size	Ridge Chip
Skin-On	Yes
Case Pack	6/4 lb.



McCain® chips look like they were made from scratch back of house, and they provide your guests a distinctive second-potato option.

TAKE HOME \$7,438* MORE ANNUALLY BY OFFERING CHIPS AS A TAKE-HOME OPTION.

To showcase Fresh-Style to-go chips: Portion 2.5 to 4 oz. of fresh chips and package in 1-lb., tin-tie coffee bags with windows. For a less expensive option, use plastic bags with twist ties.

*Based on 20 3-oz. servings of McCain® Fresh-Style Chips vs. 20 1.5-oz. servings of bagged chips per day. Bagged Chips - Food Cost: \$0.42, Selling Price: \$0.79, Profit/Serving: \$0.37.



MENU DIFFERENTIATION



PLATE COVERAGE



HEAT RETENTION



LONG-LASTING CRISPNESS



BAKE-CONVENTIONAL



BAKE-CONVECTION



DEEP FRY



GRIDDLE



STOVETOP



STEAMER



MICROWAVE



K-12





Chopped, Diced & Cubed

Ingredient potatoes that reduce prep time while maintaining consistent taste and appearance.

McCain® Chopped Seasoned Skin-On Half-Cut Roasted Redskin [Garlic, Rosemary & Herb]



Tasty, skin-on, roasted reidskin potatoes thoughtfully seasoned with a well-balanced blend of garlic, rosemary and herb.

Code	MCF04812
Length	NA
Cut Size	Chopped Dice
Skin-On	Yes
Case Pack	4/3 lb.



McCain® Chopped Seasoned Skin-On Roasted Potato [Garlic, Rosemary & Herb]



Chopped, skin-on roasted potato chunks seasoned with a well-balanced blend of garlic, rosemary and herb.

Code	MCF03927
Length	NA
Cut Size	Chopped Dice
Skin-On	Yes
Case Pack	6/5 lb.



McCain® Chopped Seasoned Skin-On Roasted Redskin [Garlic, Rosemary & Herb]



Delicious, skin-on, roasted reidskin potatoes chopped and seasoned with a well-balanced blend of garlic, rosemary and herb.

Code	MCF04851
Length	NA
Cut Size	Chopped Dice
Skin-On	Yes
Case Pack	4/4 lb.



McCain® Skin-On Hash Brown Cubes 3/8" X 3/4" X 3/4"



Skin-on, diced hash brown cubes cooked until perfectly crisp. A great way to start any day... especially this one.

Code	OIF00335A
Length	NA
Cut Size	Cube
Skin-On	Yes
Case Pack	6/6 lb.



McCain® Hash Brown Cubes 3/4" X 1" X 5/8"



Authentic cuts of wholesome, hearty potatoes bursting with natural flavor. Cooked until reaching a golden hue.

Code	OIF252A
Length	NA
Cut Size	Cube
Skin-On	No
Case Pack	6/5 lb.



McCain Signature® Skin-On Hash Brown Cubes 3/4" X 1" X 5/8"



Skin-on, diced hash brown cubes, lightly brined to amplify the hearty potato flavor. Pairs perfectly with any breakfast.

Code	MCS302
Length	NA
Cut Size	Cube
Skin-On	Yes
Case Pack	6/5 lb.



McCain® Redstone Canyon® Skin-On Hash Brown Cubes 3/4" X 1" X 5/8"



Homestyle, skin-on hash brown cubes coated in a flavor-packed, visible savory seasoning for a unique taste.

Code	MCL03624
Length	NA
Cut Size	Cube
Skin-On	Yes
Case Pack	6/5 lb.



McCain® Seasoned Skin-Off Homestyle Mashed Potatoes



Freshly made, smooth and creamy mashed potatoes are pure joy to the senses. Treat yourself to a taste of home.

Code	OIF03613
Length	NA
Cut Size	Mash
Skin-On	No
Case Pack	6/4 lb.



McCain® Unseasoned Skin-On Redskin Mashed Potatoes



The great taste of fresh reidskins, in a consistent, creamy mashed potato recipe that would make Grandma proud.

Code	OIF03631
Length	NA
Cut Size	Mash
Skin-On	Yes
Case Pack	6/4 lb.



McCain® Reduced Sodium Skin-Off Homestyle Mashed Potatoes



All of the yummy, potato goodness you've come to expect from freshly mashed russets, with reduced sodium for special dietary needs.

Code	1000002870
Length	NA
Cut Size	Mash
Skin-On	No
Case Pack	6/4 lb.



Mashed Potatoes

The taste and texture of a freshly made product without the prep.

- MENU DIFFERENTIATION
- PLATE COVERAGE
- HEAT RETENTION
- LONG-LASTING CRISPNESS
- BAKE-CONVENTIONAL
- BAKE-CONVECTION
- DEEP FRY
- GRIDDLE
- STOVETOP
- STEAMER
- MICROWAVE
- K-12



POTATOES | CLASSIC UNCOATED FRIES

FRESH ROSEMARY FRIES: Fresh-Style Fries tossed with fresh-chopped rosemary and a sprinkle of Kosher salt, served with horseradish sour cream and lemon aioli.
McCain® Fresh-Style Skin-On Regular Fries 3/8" (MCX05158)

Simple and uncoated, these classics provide natural potato flavor and texture without the scratch prep. Best served to the table immediately.



Fresh-Style

Fresh potato taste and hand-cut quality without the waste or inconsistency of scratch preparation.

McCain® Fresh-Style Skin-On Thin Fries 5/16"



Thin-cut potatoes with the skin left on for taste, then cooked until deliciously golden brown.

Code	MCX05156
Length	NA
Cut Size	5/16"
Skin-On	Yes
Case Pack	6/5 lb.



McCain® Fresh-Style Skin-On Regular Fries 3/8"



Traditional-cut potatoes with the skin left on for heartier flavor, then cooked until deliciously golden brown.

Code	MCX05158
Length	NA
Cut Size	3/8"
Skin-On	Yes
Case Pack	6/5 lb.



McCain® Fresh-Style Skin-On Regular Fries 3/8" Water Blanched



We slice up premium, skin-on potatoes, then blanch before cooking for the ultimate fresh experience.

Code	MCX05157
Length	NA
Cut Size	3/8"
Skin-On	Yes
Case Pack	6/5 lb.



Did You Know?

Fries are already one of the most profitable menu items, and when you choose a fry with great plate coverage, you can use less product for even greater profitability.

- MENU DIFFERENTIATION
- PLATE COVERAGE
- HEAT RETENTION
- LONG-LASTING CRISPNESS
- BAKE-CONVENTIONAL
- BAKE-CONVECTION
- DEEP FRY
- GRIDDLE
- STOVETOP
- STEAMER
- MICROWAVE
- K-12



XL

Longer length fries offering better plate coverage.

McCain Signature® Skin-On Julienne Fries 3/16" XL

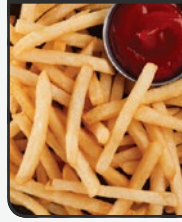


Skin-on, julienne-cut fries lightly brined to enhance the natural potato flavor for a memorable french fry experience.

Code 1000000725
Length Brined XL
Cut Size 3/16"
Skin-On Yes
Case Pack 6/5 lb.



McCain® Shoestring Fries 1/4" XL



The thin cut you love, with the skin left on to let the delicious natural potato flavor work its magic.

Code MCX01
Length XL
Cut Size 1/4"
Skin-On No
Case Pack 6/4.5 lb.



McCain® Skin-On Thin Fries 5/16" XL

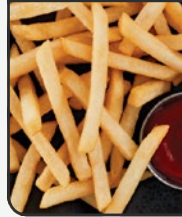


Thinly sliced, fresh potatoes cooked until golden and filled with an unforgettable taste.

Code 01F00236A
Length XL
Cut Size 5/16"
Skin-On Yes
Case Pack 6/5 lb.



McCain® Thin Fries 5/16" XL



Thinly sliced fries, prepared with natural potato freshness that shines through.

Code MCX20
Length XL
Cut Size 5/16"
Skin-On No
Case Pack 6/5 lb.



McCain® Thin Crinkle Fries 5/16" XL



Tender, crinkle-cut fries deliver natural potato-packed goodness in every bite.

Code MCX30
Length XL
Cut Size 5/16"
Skin-On No
Case Pack 6/5 lb.



McCain® Regular Fries 3/8" XL



Classic-cut french fries packed with potato goodness and a robust, natural flavor.

Code MCX40
Length XL
Cut Size 3/8"
Skin-On No
Case Pack 6/5 lb.



McCain® Skin-On Regular Fries 3/8" XL



Classic-cut, skin-on fries for natural potato taste. Cooked until irresistibly hot and golden in color.

Code 01F00276A
Length XL
Cut Size 3/8"
Skin-On Yes
Case Pack 6/5 lb.



McCain® Regular Crinkle Fries 3/8" XL



Crinkle-cut potatoes with a robust, natural flavor and crisp ridges, ideal for dipping into your favorite condiments.

Code MCX50
Length XL
Cut Size 3/8"
Skin-On No
Case Pack 6/5 lb.



McCain® Thick Deep Crinkle Fries 1/2" XL



Hearty, thick-cut fries with a light, fluffy texture, bursting with natural potato flavor.

Code 1000000724
Length XL
Cut Size 1/2"
Skin-On No
Case Pack 6/5 lb.



McCain® Thick Crinkle Fries 1/2" XL



Thick, crinkle-cut fries with natural goodness in every bite.

Code MCX60
Length XL
Cut Size 1/2"
Skin-On No
Case Pack 6/5 lb.



McCain® Bakeable Thick Crinkle Fries 1/2" XL



Thick, crinkle-cut fries with natural, potato-packed delight in every bite.

Code 01F00055A
Length XL
Cut Size 1/2"
Skin-On No
Case Pack 6/5 lb.



McCain® Steak Fries 3/8" X 3/4" XL



Thick-cut, hearty steak fries with a fluffy, baked potato-like interior and golden finish.

Code MCX75
Length XL
Cut Size 3/8" X 3/4"
Skin-On No
Case Pack 6/5 lb.



MENU DIFFERENTIATION PLATE COVERAGE HEAT RETENTION LONG-LASTING CRISPNESS
BAKE-CONVENTIONAL BAKE-CONVECTION DEEP FRY GRIDDLE STOVETOP STEAMER MICROWAVE K-12



PXL

The longest-length fries for maximum plate coverage.

McCain® Shoestring Fries 1/4" PXL



Thin shoestring fries bursting with natural potato goodness that's soft and fluffy on the inside.

Code MCG03
Length PXL
Cut Size 1/4"
Skin-On No
Case Pack 6/4.5 lb.



McCain Signature® Skin-On Shoestring Fries 1/4" PXL



We take the thin-cut shoestring fries you love, leave the skin on and lightly brine to maximize flavor.

Code MCS110
Length Brined PXL
Cut Size 1/4"
Skin-On Yes
Case Pack 6/4.5 lb.



McCain® Thin Fries 5/16" PXL



Thin-cut potatoes, specially selected for hearty flavor, then cooked until golden brown.

Code MCG20
Length PXL
Cut Size 5/16"
Skin-On No
Case Pack 6/5 lb.



McCain® Thin Crinkle Fries 5/16" PXL



Slender, crinkle-cut potatoes with a robust flavor and grooves perfect for latching onto your favorite condiments.

Code MCG30
Length PXL
Cut Size 5/16"
Skin-On No
Case Pack 6/5 lb.



McCain Signature® Skin-On Thin Fries 5/16" PXL



Thinly sliced, fresh potatoes lightly brined with the skin on for unforgettable taste and texture. Cooked until golden.

Code MCS125
Length Brined PXL
Cut Size 5/16"
Skin-On Yes
Case Pack 6/5 lb.



McCain Signature® Skin-On Regular Fries 3/8" PXL



Classic cut, skin-on fries, lightly brined to enhance the natural potato flavor and cooked until golden.

Code MCS140
Length Brined PXL
Cut Size 3/8"
Skin-On Yes
Case Pack 6/5 lb.



McCain® Regular Fries 3/8" PXL



We pay homage to America's favorite side with freshly sliced potatoes cooked until irresistibly golden and hot.

Code MCG40
Length PXL
Cut Size 3/8"
Skin-On No
Case Pack 6/5 lb.



McCain® Thick Crinkle Fries 1/2" PXL



Thick, crinkle-cut potatoes with a robust flavor and grooves perfect for latching onto your favorite condiments.

Code MCG60
Length PXL
Cut Size 1/2"
Skin-On No
Case Pack 6/5 lb.



McCain Signature® Skin-On Thick Fries 1/2" PXL



Thick-cut fries, lightly brined with the skin on for increased flavor depth.

Code MCS03691
Length Brined PXL
Cut Size 1/2"
Skin-On Yes
Case Pack 6/5 lb.



McCain® Steak Fries 3/8" X 3/4" PXL



Thick-cut steak fries with the robust potato flavor to match. Cooked until golden on the outside and fluffy on the inside.

Code MCG75
Length PXL
Cut Size 3/8 X 3/4"
Skin-On No
Case Pack 6/5 lb.



McCain Signature® Skin-On Steak Fries 3/8" X 3/4" PXL



Thick-cut steak fries with the skin on, gently brined for salty potato flavor in each bite.

Code MCS75
Length Brined PXL
Cut Size 3/8 X 3/4"
Skin-On Yes
Case Pack 6/5 lb.



Specialty Cuts

Unique fry shapes that differentiate and offer a distinctive second-fry option.

McCain Signature® Skin-On Spiral Fries



Skin-on, spiral-cut fries, lightly brined for exceptional potato flavor.

Code MCS90
Length NA
Cut Size Brined Spiral
Skin-On Yes
Case Pack 6/4 lb.



McCain® Skin-On Spiral Fries



Natural, skin-on spirals provide a heavenly potato experience with a golden color and unmatched flavor.

Code OIF01038A
Length NA
Cut Size Spiral
Skin-On Yes
Case Pack 6/4 lb.



McCain® Skin-On Waffle Fries



The golden waffle nooks and crannies make an unbeatable dipping tool. Skin-on for maximum natural potato flavor.

Code OIF01037A
Length NA
Cut Size Waffle
Skin-On Yes
Case Pack 6/4.5 lb.



McCain® Skin-On Thin 10-Cut Wedges



Thin-cut, skin-on potato wedges. Cooked until reaching a delicious exterior with a fluffy, soft interior.

Code OIF00880A
Length NA
Cut Size 10-Cut Wedge
Skin-On Yes
Case Pack 6/5 lb.



McCain® Skin-On Regular 8-Cut Wedges



Fresh-cut wedges with the skin left on for a naturally flavorful profile. Fluffy on the inside, golden on the outside.

Code OIF00024A
Length NA
Cut Size 8-Cut Wedge
Skin-On Yes
Case Pack 6/5 lb.



MENU DIFFERENTIATION PLATE COVERAGE HEAT RETENTION LONG-LASTING CRISPNESS

BAKE-CONVENTIONAL BAKE-CONVECTION DEEP FRY GRIDDLE STOVETOP STEAMER MICROWAVE K-12



POTATOES | FORMED POTATOES & SPECIALTY SHAPES

ROSEMARY PARMESAN TOTS: Golden tots seasoned with sea salt and black pepper are brushed with a fragrant blend of olive oil, rosemary and thyme and sprinkled with a dash of Parmesan cheese.
McCain® Seasoned Tots [Sea Salt & Black Pepper] (1000006009)

Fun shapes and handheld portability appeal to both kids and adults, providing all-day menuing flexibility.



Tots, Rounds, Triangles & Ovals

Chopped and formed potato specialties in a variety of shapes for all-day menu appeal.

McCain® Seasoned Tots [Buffalo]



Golden tots with bold Buffalo seasoning inside and out, for a flavorful twist on an old favorite.

Code	1000006007
Length	NA
Cut Size	Tot
Skin-On	No
Case Pack	6/5 lb.



McCain® Seasoned Tots [Ranch]



Golden tots with ranch seasoning inside and out, for a flavorful twist on an old favorite.

Code	1000006008
Length	NA
Cut Size	Tot
Skin-On	No
Case Pack	6/5 lb.



McCain® Seasoned Tots [Sea Salt & Black Pepper]



Golden tots with classic sea salt and black pepper seasoning inside and out, for a flavorful twist on an old favorite.

Code	1000006009
Length	NA
Cut Size	Tot
Skin-On	No
Case Pack	6/5 lb.



Ore-Ida® Reduced Sodium Tater Tots®



The time-tested, classic tot: crunchy on the outside, moist and tender on the inside, with reduced sodium for special dietary needs.

Code	1000002789
Length	NA
Cut Size	Tot
Skin-On	No
Case Pack	6/5 lb.



Ore-Ida® Tater Tots®



Classic, craveable, golden tots that are crispy on the outside and tender on the inside.

Code	01F00215A
Length	NA
Cut Size	Tot
Skin-On	No
Case Pack	6/5 lb.



McCain® Hash Brown Rounds



Shredded potatoes in round patties, cooked until golden crisp on the outside and fluffy on the inside.

Code	1000006188
Length	NA
Cut Size	Hash Brown Round
Skin-On	No
Case Pack	6/5 lb.



Ore-Ida® Spud Bites™ Round Bites



Shredded potatoes in bite-sized round patties, cooked until golden and crisp on the outside and fluffy on the inside.

Code	01F00093A
Length	NA
Cut Size	Hash Brown Round
Skin-On	No
Case Pack	6/5 lb.



Ore-Ida® Hash Brown Triangles



Shredded hash brown potatoes in a fun triangle shape that is crispy on the outside and tender on the inside.

Code	01F00049A
Length	NA
Cut Size	Triangle
Skin-On	No
Case Pack	6/5 lb.



Ore-Ida® Hash Brown Ovals



Shredded hash brown potatoes in a handheld shape that is crispy on the outside and tender on the inside.

Code	01F00589A
Length	NA
Cut Size	Oval
Skin-On	No
Case Pack	6/2.8125 lb.



Tots Have Never Been Hotter.

Tots have seen record growth on menus in the last few years, turning this nostalgic potato favorite into a menu star.

MENU DIFFERENTIATION
 PLATE COVERAGE
 HEAT RETENTION
 LONG-LASTING CRISPNESS
 BAKE-CONVENTIONAL
 BAKE-CONVECTION
 DEEP FRY
 GRIDDLE
 STOVETOP
 STEAMER
 MICROWAVE
 K-12



McCain® Smiles® Crispy Mashed Potato Shapes (01F03456)



Hash Browns

Traditional shredded potatoes that cut down on back-of-house labor.

Ore-Ida® IQF Hash Brown Shreds Thin



Start your morning right with these thinly shredded, fresh potatoes, cooked until crispy, golden and delicious.

Code	01F00224A
Length	NA
Cut Size	Shred-Thin
Skin-On	No
Case Pack	6/3 lb.



McCain Signature® Hash Brown Shreds Thin



Wholesome potatoes, thinly shredded, then brined for maximum flavor and cooked until crispy and golden.

Code	MCS03367
Length	NA
Cut Size	Shred-Thin
Skin-On	No
Case Pack	6/3 lb.



McCain Signature® Hash Brown Shreds Thick

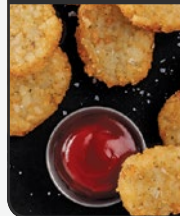


Wholesome potatoes, thickly shredded, then brined for maximum flavor and cooked until crispy and golden.

Code	MCS04686
Length	NA
Cut Size	Shred-Thick
Skin-On	No
Case Pack	6/3 lb.



McCain® BabyCakes® Seasoned Hash Brown Bites



Lightly seasoned shredded potato pancakes in a fun mini size.

Code	MCF03758
Length	NA
Cut Size	Hash Brown Bite
Skin-On	No
Case Pack	6/3 lb.



Smiles®/Emoticons™

Fun mashed potato shapes that are ideal for kids' menus.



McCain® Smiles® Crispy Mashed Potato Shapes



Mashed potatoes in shapes that make kids smile. Cooked until golden and crisp on the outside, and fluffy on the inside.

Code	01F03456
Length	NA
Cut Size	Mashed Shape
Skin-On	No
Case Pack	6/4 lb.



McCain® Emoticons™ Crispy Mashed Potato Shapes



Mashed potatoes in playful shapes that connect with kids. Golden and crisp on the outside, and fluffy on the inside.

Code	100006639
Length	NA
Cut Size	Mashed Shape
Skin-On	No
Case Pack	6/4 lb.



Handheld Breakfast

Handheld, filled potato patties that are perfect for breakfast on the go.



McCain® Hash Brown Handheld Breakfast [Bacon, Egg & Cheese]



The classic bacon, egg and cheese power breakfast wrapped in a crispy, golden hash brown to hit the spot on the run.

Code	10310688
Length	NA
Cut Size	Handheld Oval
Skin-On	No
Case Pack	4/3.75 lb.



MENU DIFFERENTIATION



PLATE COVERAGE



HEAT RETENTION



LONG-LASTING CRISPNESS



BAKE-CONVENTIONAL



BAKE-CONVECTION



DEEP FRY



GRIDDLE



STOVETOP



STEAMER



MICROWAVE



K-12



POTATOES | SEASONED & FLAVORED FRIES AND WEDGES

ZESTY CHORIZO AND ALFREDO LOADED FRIES: Mex meets Italian when crispy, seasoned spiral fries are laden with toppings of roasted red pepper and Parmesan cheese, and a generous ladle of chorizo-infused cream sauce.
McCain® Redstone Canyon® Skin-On Spiral Fries (MCL03622)

Whether dusted with savory red spices or infused with the taste of real beer in the batter, these potato favorites give restaurants a distinctive second-fry option.



Redstone Canyon®

Savory Red Battered

Crispier with more visible savory seasoning and a NEW, enhanced batter for flavor consumers rate better than before.*

McCain® Redstone Canyon® Skin-On Spiral Fries



Homestyle, skin-on, spiral fries coated in a flavor-packed, visible, savory seasoning for a unique taste and crunch.

Code MCL03622
Length NA
Cut Size Spiral
Skin-On Yes
Case Pack 6/4 lb.



McCain® Redstone Canyon® Skin-On Thin Fries 5/16" XL



Skin-on, thin fries, coated in a savory red batter for crispness and a well-balanced flavor.

Code MCX03620
Length XL
Cut Size 5/16"
Skin-On Yes
Case Pack 6/5 lb.



McCain® Redstone Canyon® Skin-On Waffle Fries



Homestyle, skin-on, waffle-cut fries coated in a flavor-packed, visible, savory seasoning for a unique taste and crunch.

Code MCL03623
Length NA
Cut Size Waffle
Skin-On Yes
Case Pack 6/4.5 lb.



McCain® Redstone Canyon® Skin-On Regular Fries 3/8" XL



Homestyle, skin-on fries coated in a flavor-packed, visible, savory seasoning for a unique taste and crunch.

Code MCX03621
Length XL
Cut Size 3/8"
Skin-On Yes
Case Pack 6/5 lb.



McCain® Redstone Canyon® Skin-On Thin 10-Cut Wedges



Homestyle, skin-on wedges coated in a flavor-packed, visible, savory seasoning for a unique taste and crunch.

Code MCX03627
Length NA
Cut Size 10-Cut Wedge
Skin-On Yes
Case Pack 6/5 lb.



McCain® Redstone Canyon® Skin-On Regular 8-Cut Wedges



Homestyle, skin-on wedges coated in a flavor-packed, visible, savory seasoning for a unique taste and crunch.

Code MCX03626
Length NA
Cut Size 8-Cut Wedge
Skin-On Yes
Case Pack 6/5 lb.



McCain® Redstone Canyon® Skin-On Thick 6-Cut Wedges



Homestyle, skin-on wedges coated in a flavor-packed, visible, savory seasoning for a unique taste and crunch.

Code MCX03625
Length NA
Cut Size 6-Cut Wedge
Skin-On Yes
Case Pack 6/5 lb.



*McCain® Proprietary Study, Dec. 2016



MENU DIFFERENTIATION



PLATE COVERAGE



HEAT RETENTION



LONG-LASTING CRISPNESS



BAKE-CONVENTIONAL



BAKE-CONVECTION



DEEP FRY



GRIDDLE



STOVETOP



STEAMER



MICROWAVE



K-12



BACON-GLAZED FRIES: Crispy, craft beer battered, thin-cut fries glazed with flavorful bacon fat are topped with sliced green onions and complemented with house-made barbecue mayonnaise. *Brew City® Beer Battered Thin Fries 5/16" XL (BC100255)*



Beer Battered

Made with real craft beer batter for handcrafted quality, balanced flavor and perfect crispness.

Brew City® Beer Battered Thin Fries 5/16" XL



Thin-cut fries with a premium craft beer batter.

Code BC100255
Length XL
Cut Size 5/16"
Skin-On No
Case Pack 6/5 lb.



Brew City® Beer Battered Wide Mouth Fries® Waffle Fries



Classic waffle-cut fries with a premium craft beer batter.

Code BC1195
Length NA
Cut Size Waffle
Skin-On No
Case Pack 6/4.5 lb.



Brew City® Beer Battered Skin-On Maxi Fries 1/4" X 1/2" XL

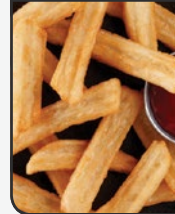


Homestyle, skin-on, thick-cut fries with a premium craft beer batter.

Code BC100256
Length XL
Cut Size 1/4" X 1/2"
Skin-On Yes
Case Pack 6/5 lb.



Brew City® Beer Battered Bottle Neck Fries® Ridge Steak Fries 3/8" X 3/4" XL



Unique, ridge-cut fries with a premium craft beer batter.

Code BC1197
Length XL
Cut Size 3/8" X 3/4"
Skin-On No
Case Pack 6/5 lb.



Crispy Bakeable

Seasoned red batter delivering crisp texture and more flavor with lower sodium.

McCain® Crispy Bakeable Seasoned Spirals



Spiral-cut fries coated in a special red-seasoned batter for a crispy potato experience.

Code 1000004108
Length NA
Cut Size Spiral
Skin-On No
Case Pack 6/4 lb.



McCain® Crispy Bakeable Seasoned Skin-On Thick Fries 1/2" XL



Skin-on, thickly sliced fries coated in a seasoned red batter for a crispier texture with more flavor.

Code MCX04717
Length XL
Cut Size 1/2"
Skin-On Yes
Case Pack 6/5 lb.



McCain® Crispy Bakeable Seasoned Skin-On Regular 8-Cut Wedges



Sliced potato wedges in a seasoned red batter. Crispy and crackly on the outside, fluffy on the inside.

Code 100000496
Length NA
Cut Size 8-Cut Wedge
Skin-On Yes
Case Pack 6/5 lb.



Offer seasoned fries as a profitable fry upgrade to your burgers and sandwiches.

McCain® Savory Seasoned [Garlic & Onion] Skin-On Thin Crinkle 10-Cut Deli Wedges



Skin-on potato wedges with deep ridges, generously seasoned with garlic and onion. Tasty on their own or for dipping.

Code MCX66004
Length NA
Cut Size 10-Cut Wedge
Skin-On Yes
Case Pack 6/5 lb.



McCain® Savory Seasoned [Garlic & Onion] Skin-On Regular Crinkle 8-Cut Deli Wedges



Skin-on potato wedges with deep ridges, generously seasoned with garlic and onion. Tasty on their own or for dipping.

Code MCX163
Length NA
Cut Size 8-Cut Wedge
Skin-On Yes
Case Pack 6/5 lb.



Savory Seasoned

Skin-on wedges featuring on-trend seasonings that deliver outstanding flavor.

MENU DIFFERENTIATION PLATE COVERAGE HEAT RETENTION LONG-LASTING CRISPNESS
BAKE-CONVENTIONAL BAKE-CONVECTION DEEP FRY GRIDDLE STOVETOP STEAMER MICROWAVE K-12

POTATOES | SWEET POTATOES

MOLE SWEET POTATO TACOS: Crispy sweet potato fries tossed in mole spices and folded into warm flour tortillas with garlicky spinach, goat cheese and peanuts are a mouthwatering treat. Served with fresh lime and zesty chili-mayo.
McCain® Harvest Splendor® Sweet Potato Thin Fries 5/16" XL (MCF03731)

The naturally sweet taste and vibrant color of sweet potatoes complements the flavor of items all across the menu. They're easy and profitable ways to add unexpected "wow" to any dish.



Sweet Potato Selections

With their naturally sweet flavor, vibrant color and crispness, *Harvest Splendor®* sweet potatoes can complement flavors across the menu and in a variety of applications.

McCain® Harvest Splendor® Sweet Potato Slim Fries 7/32" X 3/8" XL



Thin-sliced sweet potatoes selected for rich flavor, in our crispy batter.

Code	MCF05004
Length	XL
Cut Size	7/32" X 3/8"
Skin-On	No
Case Pack	6/5 lb.



McCain® Harvest Splendor® Savory Seasoned Sweet Potato Regular Fries 5/16" XL



A savory twist on traditional sweet potato fries with the same sought-after tenderness you've come to expect.

Code	1000004309
Length	XL
Cut Size	5/16"
Skin-On	No
Case Pack	6/2.5 lb.



McCain® Harvest Splendor® Sweet Potato Thin Fries 5/16" XL



Coated in a light batter and packed with natural sweet potato flavor, these thin-cut fries are crispy and delicious.

Code	MCF03731
Length	XL
Cut Size	5/16"
Skin-On	No
Case Pack	6/2.5 lb.



McCain® Harvest Splendor® Sweet Potato Cross Trax®



Huge, waffle cut sweet potatoes with a rich flavor profile.

Code	MCF05074
Length	NA
Cut Size	Waffle
Skin-On	No
Case Pack	6/2.5 lb.



McCain® Harvest Splendor® Sweet Potato Regular Fries 3/8" XL



Coated in a light batter and packed with natural sweet potato flavor, these fries are crispy and delicious.

Code	MCF03725
Length	XL
Cut Size	3/8"
Skin-On	No
Case Pack	6/2.5 lb.



McCain® Harvest Splendor® Sweet Potato Maxi Fries 1/4" X 1/2" XL



All the tenderness and rich flavor you crave in traditional sweet potato fries with a crisp batter.

Code	MCF04965
Length	XL
Cut Size	1/4" X 1/2"
Skin-On	No
Case Pack	6/2.5 lb.



McCain® Harvest Splendor® Sweet Potato Deep Groove Crinkle Fries 7/16" XL



Crinkle-cut with all the tender flavor of sweet potatoes and a light, special batter for crispness until the last bite.

Code	MCF04566
Length	XL
Cut Size	7/16"
Skin-On	No
Case Pack	6/2.5 lb.



McCain® Harvest Splendor® Sweet Potato Thin Ridge 10-Cut Wedges



Perfectly sweet, these wedges are a step up from the classic potato wedge. Try them with ketchup or your favorite dip.

Code	MCF04712
Length	NA
Cut Size	10-Cut Wedge
Skin-On	No
Case Pack	6/2.5 lb.



MENU DIFFERENTIATION
 PLATE COVERAGE
 HEAT RETENTION
 LONG-LASTING CRISPNESS
 BAKE-CONVENTIONAL
 BAKE-CONVECTION
 DEEP FRY
 GRIDDLE
 STOVETOP
 STEAMER
 MICROWAVE
 K-12



POTATOES | APPETIZER POTATOES

BREWERY BITES: McCain® Dip'n Wedges™ topped with beer cheese sauce, grilled onions, blue cheese ranch and chives.
McCain® Dip'n Wedges™ (1000007410)

Create a buzz-worthy and sought-after appetizer offering with unique potatoes designed for filling, topping, dipping and sharing.



Dip'n Wedges™

New! Loadable, toppable, dipposable potato scoops that are ready for your signature touch.

McCain® Dip'n Wedges™ Crispy V-Shaped Potato Scoops



Crispy wedges with a unique, ridged V-shape—perfect for scooping up your favorite dips and flavors.

Code	1000007410
Length	NA
Cut Size	V-Cut Wedge
Skin-On	Yes
Case Pack	6/4 lb.



Innovate profitably with McCain® Dip'n Wedges™: Menu as a dipposable, shareable, entrée base or premium fry.



Potato Skins

Pre-baked and quick-frozen for fast, easy and reliable preparation.

McCain® Potato Skins 3-1/4" to 4-1/4" L



Mouthwatering potato skins cooked until golden and ready to top with your favorite ingredients.

Code	MCX03602
Length	NA
Cut Size	Potato Skin
Skin-On	Yes
Case Pack	4/4.25 lb.



- MENU DIFFERENTIATION
- PLATE COVERAGE
- HEAT RETENTION
- LONG-LASTING CRISPNESS
- BAKE-CONVENTIONAL
- BAKE-CONVECTION
- DEEP FRY
- GRIDDLE
- STOVETOP
- STEAMER
- MICROWAVE
- K-12



APPETIZERS

**CHOOSE FROM MORE THAN 100 VERSATILE, CRAVEABLE ITEMS YOU CAN USE
IN ENDLESS WAYS TO CREATE PROFITABLE OFFERINGS ACROSS YOUR MENU.**

HOW TO SELECT THE RIGHT APPETIZER

With so many classic and innovative appetizers to choose from, how do you decide what's best for your menu? The choice often has to do with whether the item is breaded or battered. Here are the differences.

- - **BATTERED PRODUCTS** - -

- Deep-fried appearance - Crispy texture and bite -



STANDARD BATTERED

- Extended hold time
- Crispy texture

BEER BATTERED

- Made with premium craft beer
- Maximum crispness



FLOUR COATING

- Scratch-made look
- Light golden color
- Light, crispy bite



- - BREADED PRODUCTS - -

- Homestyle in appearance like you're hand-breading back of house -
- Crunchy texture and bite -



AMERICAN CRUMB

- Homestyle look
- Two-tone coloration

GOURMET CRUMB

- Premium panko breading
- Golden color
- Maximum crunch



NARROWING YOUR SELECTION

Once you've decided on a specific appetizer category, choosing products with attributes like spiciness or craft beer batter can add additional distinction to your menu offerings. Look for the icons below throughout the guide to help you spot the right products.



YOU WANT:

SPICY FLAVOR

Look for: Pepper products or spices in the batter.



YOU WANT:

PREMIUM CRAFT BEER

Look for: *Brew City*® products with real craft beer in the batter.



YOU WANT:

HOMESTYLE APPEARANCE

Look for: Crunchy-style breading, like panko.



SO MANY WAYS TO BRING — — — FUN TO THE PLATE — — —

Guests are always looking for something new and different. Operators are always working to make more with less. McCain Foods appetizer brands can help keep the menu fresh and surprising with their endless versatility and flexibility. Find great products, mouthwatering menu ideas, pairing suggestions for beer and beverages, and other tools to build check averages all day.



Onions, Cheese, Peppers, Vegetables

Made with real craft beer batter, *Brew City*® appetizers look and taste handcrafted with their balanced flavor and perfect crispness.



Brew City® 1/2" Beer Battered IPA Onion Rings 4X2.5 LB (1000005935)



Cheese, Peppers, Vegetables

Anchor® appetizers are versatile, guest-loved favorites that can serve as snacks, toppers or garnishes too. Try our innovative menu ideas for perfect pairings to your high-margin beverages.



Anchor® 3/8" Battered Spicy Pickle Fries 4X3 LB (1000005137)





Moore's 3/4" Breaded Gourmet Onion Rings 12X2 LB (40010021)



Onions

Offer these exceptional quality onions as appetizers, side upgrades, toppers and more. Highly profitable and popular.



Golden Crisp® Battered Sweet Corn Nuggets 6X2 LB (80008428)



Onions, Cheese, Peppers, Vegetables

From trusted favorites to more unique options, *Golden Crisp®* snacks and appetizers work hard across your menu to please guests.



Grabitzers™ Battered Cheese Sticks 4X2.5 LB (96110725)



Onions, Cheese, Vegetables, Handheld Breakfast

Choose from a classic assortment of affordable appetizer items that are customer favorites.



APPETIZERS | CHEESE

CUBAN POUTINE: A bold reimagining of Cuban and Canadian favorites featuring two irresistible *Anchor* originals: Breaded Wisconsin Cheese Curds (1000005885) and Spicy Pickle Fries (1000005137).

You simply can't miss with the number-one craved appetizer: cheese. Satisfy guests' ever-present craving for cheese appetizers and snacks with the shape or style that's right for your menu.



Anchor® Battered Broccoli and Cheese Bites 6X2.5 LB



A classic combination of flavors with tender broccoli and velvety American cheese dipped in a light batter and golden browned.

Code 50010129
Type Battered
Cut Size NA
Case Pack 6/2.5 lb.



Anchor® Breaded Cheddar and Broccoli Bites 6X2.5 LB



Mini broccoli florets with cheddar cheese, real bacon and sweet onions in our light, crispy, potato-flake breading.

Code 50010277
Type Breaded
Cut Size NA
Case Pack 6/2.5 lb.



Anchor® Battered Chili Pepper Cheese Bites 6X2.5 LB



Irresistibly melted Monterey Jack and cheddar mixed with mild chili, jalapeño and green peppers in a crisp, light batter.

Code 50010130
Type Battered
Cut Size NA
Case Pack 6/2.5 lb.



Anchor® Breaded Cheddar Cheese Cubes 6X3 LB



Bite-sized cubes of savory cheddar cheese, rolled around in a specially seasoned, old-fashioned, crisp crumb breading.

Code 50010128
Type Breaded
Cut Size NA
Case Pack 6/3 lb.



Anchor® Breaded Hot Pepper Cheese Cubes 6X3 LB



Cubes of smooth Jack cheese speckled with lively jalapeño pieces, covered in fine breadcrumbs and fried.

Code 50010119
Type Breaded
Cut Size NA
Case Pack 6/3 lb.



Anchor® Breaded Natural Cheddar Cheese Nuggets 6X3 LB



Scrumptious nuggets of cheddar cheese, covered in a light Japanese-style breadcrumb coating and carefully fried.

Code 50010112
Type Breaded
Cut Size NA
Case Pack 6/3 lb.



Anchor® Breaded Natural White Cheddar Cheese Nuggets 6X3 LB



Authentic, white cheddar cheese curds, dressed up in a light Japanese-style breadcrumb coating and flash-fried.

Code 50010102
Type Breaded
Cut Size NA
Case Pack 6/3 lb.



Anchor® Battered Cheese Nuggets 6X3 LB



Nuggets of yellow cheese dipped in our house batter and pulled from the fryer when hot and crisp.

Code 50010114
Type Battered
Cut Size NA
Case Pack 6/3 lb.



Anchor® Breaded Wisconsin Cheese Curds 2X5 LB



Authentic, fresh Wisconsin cheese curds, lightly coated in an impossibly crisp batter, flash-fried and served golden.

Code 1000005885
Type Breaded
Cut Size NA
Case Pack 2/5 lb.



Anchor® Spicy Breaded Wisconsin Cheese Curds 2X5 LB



Lightly breaded, fresh Wisconsin cheese curds look house-made and deliver authentic taste with a spicy kick in every bite.

Code 1000007891
Type Breaded
Cut Size NA
Case Pack 2/5 lb.



Anchor® 1-1/2" Breaded Mini Mozzarella Cheese Sticks 6X3 LB



There are few sure things in life—fried mozzarella covered in Italian seasoned breading is one of them.

Code 50010116
Type Breaded
Cut Size 1-1/2"
Case Pack 6/3 lb.



CRAFT BEER SPICY FLAVOR HOMESTYLE APPEARANCE

BAKE-CONVENTIONAL BAKE-CONVECTION DEEP FRY GRIDDLE STOVETOP STEAMER MICROWAVE K-12



PIZZA MARGHERITA GRILLED CHEESE: Hot, melty mozzarella sticks and fresh basil leaves are sandwiched between garlic bread slices smothered with sweet, rich marinara sauce.
Anchor® 3 1/4" Breaded Italian Mozzarella Cheese Sticks 6X4 LB (50006240)

CHEESE STICKS

These tried-and-true classic appetizers are still growing in popularity.

CURDS

Made with real Wisconsin cheese, curds have a traditional "squeak" and bite that says they're authentic.

Anchor® 2-3/4" Battered Mozzarella Cheese Sticks 6X2.5 LB



Mozzarella cheese dipped in a light batter and fried to crispy, golden perfection.

Code 50010109
Type Battered
Cut Size 2-3/4"
Case Pack 6/2.5 lb.



Anchor® 3" Breaded Ovenable Mozzarella Cheese Sticks 4X3 LB



Naturally aged, rich mozzarella encrusted in our crispy Italian breading and browned until irresistibly just right.

Code 50003494
Type Breaded
Cut Size 3"
Case Pack 4/3 lb.



Anchor® 3-1/4" Breaded Italian Mozzarella Cheese Sticks 6X3 LB



Delicious mozzarella cheese coated in fine breadcrumbs with Italian seasoning and fried until irresistibly crisp and golden.

Code 50010122
Type Breaded
Cut Size 3-1/4"
Case Pack 6/3 lb.



Anchor® 3-1/4" Breaded Italian Mozzarella Cheese Sticks 6X4 LB



Creamy mozzarella crusted with fine bread crumbs and Italian seasoning, then cooked until reaching a golden color.

Code 50006240
Type Breaded
Cut Size 3-1/4"
Case Pack 6/4 lb.



Anchor® 3-1/4" Breaded Italian Mozzarella Sticks 6X4 LB



Delicious mozzarella cheese coated in fine breadcrumbs with Italian seasoning and fried until irresistibly crisp and golden.

Code 50010107
Type Breaded
Cut Size 3-1/4"
Case Pack 6/4 lb.



Anchor® 3-1/4" Breaded Mozzarella Cheese Sticks 4X3 LB



There are few sure things in life—fried mozzarella covered in old-fashioned breadcrumbs and parsley is one of them.

Code 50004152
Type Breaded
Cut Size 3-1/4"
Case Pack 4/3 lb.



Anchor® 3-1/4" Breaded Italian Mozzarella Cheese Sticks 4X4 LB



Mouthwatering sticks of mozzarella cheese layered with Parmesan and Romano cheese breading and fried until perfectly crisp.

Code 50010105
Type Breaded
Cut Size 3-1/4"
Case Pack 4/4 lb.



Anchor® 4" Breaded Primo Mozzā Cheese Sticks 4X4 LB



We take premium mozzarella, roll it in our garlic butter breading and then lightly fry until crisp.

Code 50007400
Type Breaded
Cut Size 4"
Case Pack 4/4 lb.



Anchor® 4-1/2" Breaded Garlic Butter Provolone Cheese Sticks 2X4 LB

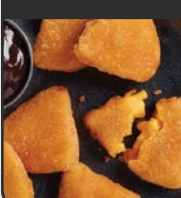


Extra-long provolone sticks covered in garlic butter breading and fried until crunchy outside and heavenly gooey inside.

Code 45010206
Type Breaded
Cut Size 4-1/2"
Case Pack 2/4 lb.



Anchor® Battered Mac & Cheese Wedges 6X3 LB

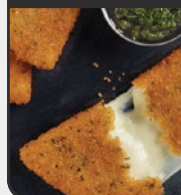


Wedges of mac & cheese are coated in a cheddar batter, deep fried and served hot and delicious.

Code 50010335
Type Battered
Cut Size NA
Case Pack 6/3 lb.



Anchor® MozzaLuna® Breaded Mozzarella Cheese 2X4 LB



Half-moon mozzarella cheese adorned with oregano, Romano and garlic Italian breading, and oozing with stretchy goodness.

Code 45010202
Type Breaded
Cut Size NA
Case Pack 2/4 lb.



Anchor® MozzaMia® Breaded Mozzarella Cheese 2X4 LB



Sizzling, bite-sized mozzarella cheese wedges rolled in oregano, Romano and garlic Italian. True classics always deliver.

Code 45010204
Type Breaded
Cut Size NA
Case Pack 2/4 lb.



CRAFT BEER SPICY FLAVOR HOMESTYLE APPEARANCE

BAKE-CONVENTIONAL BAKE-CONVECTION DEEP FRY GRIDDLE STOVETOP STEAMER MICROWAVE K-12





BLOODY MARY-NARA: Rich and creamy beer-battered fried cheese braces a spicy bloody mary-nara sauce and fresh green olives for the ultimate flavor combo.
Brew City® Beer Battered Mozzarella Cheese Sticks 6X3 LB (70004008)



Brew City® IPA Beer Battered Gouda & Mozzarella Cheese Bites 4X3 LB



Smoky Gouda cheese is blended with soft mozzarella, a batter made with real craft beer, then deep fried for a malty, hoppy, smoky cheese bite.

Code 1000006814
 Type Battered
 Cut Size NA
 Case Pack 4/3 lb.



Brew City® Mac 'N Jack Brew Bites™ Beer Battered Mac & Cheese Bites 4X2 LB



Spicy Pepper Jack cheese, real bacon and tender elbow macaroni noodles in an irresistible, crispy, craft beer batter.

Code 1000000516
 Type Battered
 Cut Size NA
 Case Pack 4/2 lb.



Brew City® Cheddar Pints® Beer Battered Cheddar Cheese Curds 4X3 LB



These white cheddar cheese curds are as tasty as you'd imagine because they're dipped in a premium craft beer batter before frying to perfection.

Code 70010597
 Type Battered
 Cut Size NA
 Case Pack 4/3 lb.



Brew City® 2" Beer Battered Monterey Jack Cheese Sticks 6X3 LB



Bite-sized sticks of Monterey Jack dipped in our lavish, crispy beer batter and cooked until sizzling and golden.

Code 70004007
 Type Battered
 Cut Size 2"
 Case Pack 6/3 lb.



Brew City® Beer Battered Mozzarella Cheese Sticks 6X3 LB



Delicious mozzarella delicately layered in craft beer batter and cooked until golden.

Code 70004008
 Type Battered
 Cut Size NA
 Case Pack 6/3 lb.



CRAFT BEER SPICY FLAVOR HOMESTYLE APPEARANCE

BAKE-CONVENTIONAL BAKE-CONVECTION DEEP FRY GRIDDLE STOVETOP STEAMER MICROWAVE K-12





Golden Crisp® Breaded Cheddar Cheese Potato Bites 4X3 LB



Bite-sized, shredded potatoes with a blend of cheddar and mozzarella that's finished with a crunchy coating.

Code 1000001467
Type Breaded
Cut Size NA
Case Pack 4/3 lb.



Golden Crisp® Breaded Jalapeño Cheddar Potato Bites 4X3 LB



A mix of potato, cheddar cheese and spicy jalapeños in crisp, bite-sized, golden spheres.

Code 1000001488
Type Breaded
Cut Size NA
Case Pack 4/3 lb.



Golden Crisp® Battered Cheese Nuggets 6X2 LB



Scrumptious, bite-sized nuggets of cheddar dipped in a crispy golden batter.

Code 80008476
Type Battered
Cut Size NA
Case Pack 6/2 lb.



Golden Crisp® Advantage Battered Mozzarella Sticks 6X2 LB



Delectable sticks of mozzarella layered with a Parmesan and Romano cheese breading and fried until perfectly crunchy.

Code 80010445
Type Battered
Cut Size NA
Case Pack 6/2 lb.



Golden Crisp® 2-3/4" Battered Mozzarella Cheese Sticks 6X2 LB



Creamy, rich mozzarella cheese strips dipped in a crispy batter and cooked until reaching a divine golden brown.

Code 80008480
Type Battered
Cut Size 2-3/4"
Case Pack 6/2 lb.



Golden Crisp® 3" Breaded Mozzarella Cheese Sticks 6X2 LB



Creamy mozzarella crusted with Japanese breadcrumbs and parsley flakes. Cooked until immaculately golden brown.

Code 80011004
Type Breaded
Cut Size 3"
Case Pack 6/2 lb.



Golden Crisp® 3-1/4" Breaded Italian Mozzarella Cheese Sticks 6X2 LB



Creamy mozzarella crusted with Japanese breadcrumbs and Italian herbs, then cooked until reaching a golden color.

Code 80007260
Type Breaded
Cut Size 3-1/4"
Case Pack 6/2 lb.



Golden Crisp® 3-1/4" Breaded Ovenable Mozzarella Cheese Sticks 6X2 LB

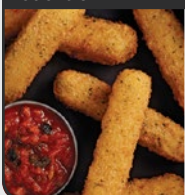


Heavenly, rich mozzarella encrusted in a seasoned, crunchy breading and browned until irresistible.

Code 80003083
Type Breaded
Cut Size 3-1/4"
Case Pack 6/2 lb.



Golden Crisp® 3-1/4" Breaded Mozzarella Cheese Sticks 6X2 LB



Rich, gooey mozzarella crusted with our American breadcrumb coating and flash-fried not a second too long.

Code 80008465
Type Breaded
Cut Size 3-1/4"
Case Pack 6/2 lb.



Golden Crisp® Mac & Cheese Wedge 6X3 LB



Luxuriously rich, melted cheddar cheese mixed with tender stick macaroni and coated with a crispy cheddar batter.

Code 80010746
Type Battered
Cut Size NA
Case Pack 6/3 lb.



Cheese is one of the most popular and profitable appetizers.



McCain® Grabitzers™ Battered Cheese Sticks 4X2.5 LB



Rich, gooey mozzarella crusted with our light, crispy batter and flash-fried not a second too long.

Code 96110725
Type Battered
Cut Size 3-1/2"
Case Pack 4/2.5 lb.



McCain® Grabitzers™ Breaded Cheese Sticks 4X2.5 LB



Creamy, rich mozzarella rolled in a crunchy breadcrumb coating and flash-fried until perfectly crunchy and golden.

Code 96110726
Type Breaded
Cut Size 3-1/2"
Case Pack 4/2.5 lb.



DRAW TRAFFIC WITH SOCIAL MEDIA DURING SPORTING EVENTS

Sports events are great times to promote your appetizers on social media. Ask your salesperson about our toolkit with posting suggestions, as well as available merchandising.



CRAFT BEER SPICY FLAVOR HOMESTYLE APPEARANCE

BAKE-CONVENTIONAL BAKE-CONVECTION DEEP FRY GRIDDLE STOVETOP STEAMER MICROWAVE K-12



APPETIZERS | ONIONS

MOROCCAN ONION SCOOPS: Enjoy the crispy sweetness of craft beer battered onion petals dusted with cumin and garlic salt and served with hand-mashed Harissa Hummus.
Brew City® Hot Scoopers® Beer Battered Onion Petals 9X2.5 LB (70010517)

With their versatility as appetizers, sides and creative toppers for sandwiches, breaded or battered onions are appearing on menus everywhere and they're commanding higher menu prices as well. Capture your share of sales with options just right for your operational needs and guest preferences.



Brew City® 3/16" Beer Battered Pub Rings 6X2.5 LB



Carefully sliced ultra-thin onions smothered in our premium beer batter and expertly cooked for optimal crispness.

Code 70010013
 Type Battered
 Cut Size 3/16"
 Case Pack 6/2.5 lb.



Brew City® 3/8" Beer Battered Thin Cut Onion Rings 6X2.5 LB



These thin-cut rings are twice-dipped in a premium craft beer batter. They're great as a side or even a meal.

Code 70010010
 Type Battered
 Cut Size 3/8"
 Case Pack 6/2.5 lb.



Brew City® 1/2" Beer Battered IPA Onion Rings 4X2.5 LB



Two classics brought together in a single crunch. Our sweet onions are made with real craft beer batter for a medium-bodied, malty taste.

Code 1000005935
 Type Battered
 Cut Size 1/2"
 Case Pack 4/2.5 lb.



Brew City® 5/8" Beer Battered Thick Cut Onion Rings 6X2.5 LB



Thick-cut onions, double-dipped in our unforgettably delicious, crispy beer batter and cooked until golden brown.

Code 70010011
 Type Battered
 Cut Size 5/8"
 Case Pack 6/2.5 lb.



Brew City® Black & Tan® 5/8" Beer Battered Onion Rings 6X2 LB



Thick-cut onions slathered in our crispy beer batter and then drizzled with a dark stout for unforgettable flavor.

Code 70010677
 Type Battered
 Cut Size 5/8"
 Case Pack 6/2 lb.



Brew City® King Rings® Beer Battered Onion Rings 4X2.5 LB



Thick-cut onions generously coated in our uniquely delicious, crispy beer batter and cooked until golden brown.

Code 70010009
 Type Battered
 Cut Size NA
 Case Pack 4/2.5 lb.



Brew City® Hot Scoopers® Beer Battered Onion Petals 9X2.5 LB



Thoughtfully plucked onion petals dunked in a special, jalapeño-speckled craft beer batter and cooked until bursting with crisp goodness.

Code 70010517
 Type Battered
 Cut Size NA
 Case Pack 9/2.5 lb.



Brew City® Beer Battered Thin Onion Straws 9X2 LB



Thinly sliced onions covered in our premium beer batter. Cooked until heavenly crisp and served at peak hotness.

Code 70010012
 Type Battered
 Cut Size NA
 Case Pack 9/2 lb.



WHY ONIONS ARE A MENU MUST-HAVE

Onions in all of their various forms are the second most popular appetizers on menus today. Offer them at an upcharge as a premium side, appetizer or topper.



Brew City® 5/8" Beer Battered Thick Cut Onion Rings (70010011)

CRAFT BEER SPICY FLAVOR HOMESTYLE APPEARANCE

BAKE-CONVENTIONAL BAKE-CONVECTION DEEP FRY GRIDDLE STOVETOP STEAMER MICROWAVE K-12



RINGS OF FIRE: Breaded sweet onions tossed with melted hot butter sauce and dusted with Cajun spices.
Moore's® 1/2" Flour Flip't® Onion Rings 4X2.5 LB (40010679)



Moore's® Vidalia® 3/8" Battered Onion Rings 4X2.5 LB

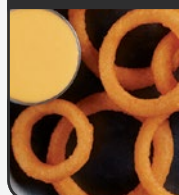


Thinly sliced, sweet *Vidalia®* onions dipped in a scrumptious batter and cooked until delightfully crisp.

Code 40010667
 Type Battered
 Cut Size 3/8"
 Case Pack 4/2.5 lb.



Moore's® 3/8" Battered Onion Rings 6X2.5 LB



Thinly sliced, juicy sweet onions dipped in our light, crisp batter and cooked until perfectly golden.

Code 40010043
 Type Battered
 Cut Size NA
 Case Pack 6/2.5 lb.



Moore's® 3/8" Breaded Gourmet Onion Rings 9X2 LB



Sweet yellow onions tossed in a crunchy, Japanese-style crumb breading for optimal crispness.

Code 40010081
 Type Breaded
 Cut Size 3/8"
 Case Pack 9/2 lb.



Moore's® 3/8" Breaded Homestyle Onion Rings 12X2.5 LB

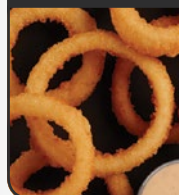


Thick-cut, sweet yellow onions coated with homestyle breading for those who enjoy things made the way they used to be.

Code 40010027
 Type Breaded
 Cut Size 3/8"
 Case Pack 12/2.5 lb.



Moore's® 3/8" Breaded Onion Rings 8X2.5 LB



Savory, sweet onions tossed in an exceptionally light breading with a memorable crunch that bursts with flavor.

Code 40010533
 Type Breaded
 Cut Size 3/8"
 Case Pack 8/2.5 lb.



Moore's® 3/8" Breaded White Onion Rings 12X2 LB



Thinly sliced, sweet onions lathered in a white breadcrumb coating for the ultimate crispiness with your favorite dip.

Code 40010025
 Type Breaded
 Cut Size 3/8"
 Case Pack 12/2 lb.



Moore's® 1/2" Battered Onion Rings 6X2.5 LB



Sweet yellow onions sliced and coated with our light batter for golden crispness that snaps with every bite.

Code 40010048
 Type Battered
 Cut Size 1/2"
 Case Pack 6/2.5 lb.



Moore's® Bakeables® 1/2" Breaded Onion Rings 4X2.5 LB



Sweet yellow onions tossed in a crunchy Japanese-style crumb breading and cooked until blissfully golden crisp.

Code 40003495
 Type Breaded
 Cut Size 1/2"
 Case Pack 4/2.5 lb.



Moore's® 1/2" Flour Flip't® Onion Rings 4X2.5 LB



Thick-cut, sweet yellow onions coated with a light, crispy flour batter that rewards your senses with every nibble.

Code 40010679
 Type Breaded
 Cut Size 1/2"
 Case Pack 4/2.5 lb.



Moore's® 5/8" Breaded Gourmet Onion Rings 12X2 LB



Sweet onions tossed in a crunchy Japanese-style crumb breading.

Code 40010023
 Type Breaded
 Cut Size 5/8"
 Case Pack 12/2 lb.



Moore's® 5/8" Breaded Steak Cut Onion Rings 12X2 LB



Thick-cut, sweet onions generously coated in our crispy American crumb breading.

Code 40010031
 Type Breaded
 Cut Size 5/8"
 Case Pack 12/2 lb.



CRAFT BEER SPICY FLAVOR HOMESTYLE APPEARANCE

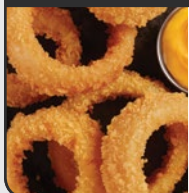
BAKE-CONVENTIONAL BAKE-CONVECTION DEEP FRY GRIDDLE STOVETOP STEAMER MICROWAVE K-12





CRISPY ONION PUB BURGER: Turn an ordinary burger into a premium experience with *Moore's*® Spicy Breaded Onion Straws (1000007668). Smother a beef patty with Swiss cheese, fried onion strings and horseradish mayo.

Moore's® 3/4" Breaded Gourmet Onion Rings 12X2 LB



Sweet onions sliced thick, then tossed in a crunchy Japanese-style crumb breading and cooked until golden crisp.

Code 40010021
Type Breaded
Cut Size 3/4"
Case Pack 12/2 lb.



Moore's® Onion Tangles® 1/8" Breaded Onion Slivers 6X2 LB



Sweet onions sliced into thin strips and lightly dressed in a made-from-scratch-style breading recipe crisp with yumminess.

Code 40010016
Type Breaded
Cut Size 1/8"
Case Pack 6/2 lb.



Moore's® Battered Onion Petals 9X2.5 LB



Delicately carved sweet onion petals dunked in a special seasoned batter and cooked until bursting with crisp goodness.

Code 40010051
Type Battered
Cut Size NA
Case Pack 9/2.5 lb.



Moore's® Onion Twiggs® Battered Onion Straws 9X2 LB



Thinly sliced, sweet yellow onions covered in a light, savory batter. Cooked until perfectly crisp and served piping hot.

Code 40010038
Type Battered
Cut Size NA
Case Pack 9/2 lb.



Moore's® Spicy Breaded Onion Straws 6X2 LB

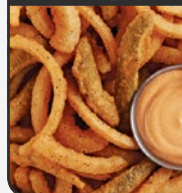


Thinly sliced onions coated in a spicy, crispy breading. Perfect to serve as a topper or add to a build.

Code 1000007668
Type Breaded
Cut Size NA
Case Pack 6/2 lb.



Moore's® Texas Toothpicks® Battered Jalapeño & Onion Strips 9X2 LB

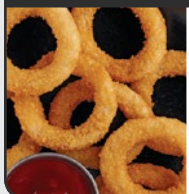


Mild jalapeños and sweet onions sliced into slender strips and lavishly dipped in a spicy, crisp batter for pure delight.

Code 40010041
Type Battered
Cut Size NA
Case Pack 9/2 lb.



Moore's® Breaded Preformed Onion Rings 8X2 LB



We dice sweet onions and then shape them into perfect rings before coating with our house breading for tasty crispness.

Code 40010233
Type Breaded
Cut Size NA
Case Pack 8/2 lb.



Moore's® Breaded Preformed Onion Rings 12X2 LB



Diced, scrumptious, juicy onions covered in our breading, then cooked to a perfect crispness.

Code 40010017
Type Breaded
Cut Size NA
Case Pack 12/2 lb.



SLIVERS, PETALS AND STRAWS

These unexpectedly shaped onions work great as distinctive sides and toppers for sandwiches, salads, entrées and more.

CRAFT BEER SPICY FLAVOR HOMESTYLE APPEARANCE

BAKE-CONVENTIONAL BAKE-CONVECTION DEEP FRY GRIDDLE STOVETOP STEAMER MICROWAVE K-12

Golden Crisp® 5/8" Beer Battered Thick Onion Rings 6X2.5 LB (80010234)



Golden Crisp® 1/4" Battered Onion Rings 4X2.5 LB

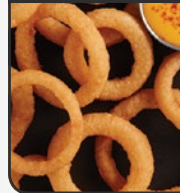


Thinly sliced, flavorful onions coated in light and crisp batter, then cooked until perfectly golden in color.

Code 80010094
Type Battered
Cut Size 1/4"
Case Pack 4/2.5 lb.



Golden Crisp® 1/4" Battered Skinny Cut Onion Rings 4X2.75 LB



We take delicious onions, cut into thin slices and gently coat in a light breading for a remarkable, crunchy texture.

Code 80010300
Type Battered
Cut Size 1/4"
Case Pack 4/2.75 lb.



Golden Crisp® 1/4" Battered Skinny Cut Onion Rings 4X2.75 LB



Thinly sliced onions tossed in an exceptionally light batter with a memorable crispness that bursts with deliciousness.

Code 80010035
Type Battered
Cut Size 1/4"
Case Pack 4/2.75 lb.



Golden Crisp® 3/8" Battered Skinny Cut Onion Rings 6X2.5 LB

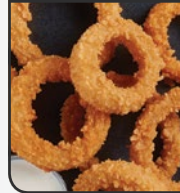


Thinly sliced onions, tossed in an exceptionally light breading with a memorable crunch bursting with delight.

Code 80010177
Type Battered
Cut Size 3/8"
Case Pack 6/2.5 lb.



Golden Crisp® 3/8" Breaded Thin Cut Onion Rings 9X2 LB



Thinly sliced onions dressed in our breadcrumb coating for ultimate crunchy delight.

Code 80010625
Type Breaded
Cut Size 3/8"
Case Pack 9/2 lb.



Golden Crisp® 1/2" Battered Onion Rings 6X2.75 LB



Onion slices covered with an unforgettable, light and crispy tempura-style batter, then served steaming hot.

Code 80010074
Type Battered
Cut Size 1/2"
Case Pack 6/2.75 lb.



Golden Crisp® 5/8" Beer Battered Thick Onion Rings 6X2.5 LB



Thick-cut onions, slathered in a crispy beer batter and then cooked until golden with a delicious, time-tested flavor.

Code 80010234
Type Battered
Cut Size 5/8"
Case Pack 6/2.5 lb.



Golden Crisp® Battered Onion Petals 9X2.5 LB



Onion wedges dunked in a specially seasoned batter and expertly cooked until soul-satisfyingly crisp.

Code 80010053
Type Battered
Cut Size NA
Case Pack 9/2.5 lb.



Preformed Means Portion Control.

When portion control consistency is a must, preformed rings ensure it, while satisfying guests with their craveable crunch.



McCain® Grabitzers™ Battered Preformed Onion Rings 12X2 LB

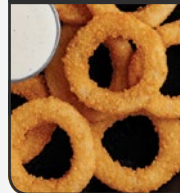


Diced, scrumptiously juicy onions shaped and dipped in a savory batter.

Code 96110848
Type Battered
Cut Size NA
Case Pack 12/2 lb.



McCain® Grabitzers™ Breaded Preformed Onion Rings 12X2 LB



We finely chop fresh onions, then cover them in our flavorful breading and cook until they reach a perfect, crispy golden brown.

Code 96110849
Type Breaded
Cut Size NA
Case Pack 12/2 lb.



CRAFT BEER SPICY FLAVOR HOMESTYLE APPEARANCE

BAKE-CONVENTIONAL BAKE-CONVECTION DEEP FRY GRIDDLE STOVETOP STEAMER MICROWAVE K-12



APPETIZERS | PEPPERS

PIZZA STEAK GRINDER AND POPPERS: A classic Italian sub loaded with thin-sliced prime rib, sautéed onions and bell peppers covered in mozzarella cheese. Served with zesty cheese-filled jalapeño bites. *Anchor® Breaded Original Cream Cheese Stuffed Jalapeños 4X4 LB (30005620)*

Heat up profits with cheese-stuffed jalapeños that satisfy guests' never-ending yearning for cheese as well as their increasing desire for something spicy.



Anchor® Poppers® Breaded Cheddar Cheese & Bacon Stuffed Jalapeños 4X3 LB



Zesty jalapeños filled with creamy cheddar cheese and mouthwatering smoky bacon, then coated with a light, crispy breading.

Code 1000005427
Type Breaded
Cut Size NA
Case Pack 4/3 lb.



Anchor® Poppers® Breaded Cream Cheese & Bacon Stuffed Jalapeños 4X3 LB



All of the crunchy, creamy, spicy brilliance of the classic Popper, taken to the next level with savory, smoky bacon inside.

Code 1000005426
Type Breaded
Cut Size NA
Case Pack 4/3 lb.



Anchor® Fiesta Bold Poppers™ Breaded Cream Cheese Stuffed Jalapeños 2X4 LB



Red jalapeño pepper halves smothered with chili cream cheese and covered in a crispy breadcrumb and chili flake crust.

Code 30010718
Type Breaded
Cut Size NA
Case Pack 2/4 lb.



Anchor® Poppers® Breaded Original Cheddar Cheese Stuffed Jalapeños 4X4 LB



Mild jalapeño peppers bursting with creamy cheddar cheese and coated with a light, crispy potato flake breading.

Code 30005630
Type Breaded
Cut Size NA
Case Pack 4/4 lb.



Anchor® Poppers® Breaded Original Cream Cheese Stuffed Jalapeños 4X4 LB



Stuffed, mild jalapeño pepper halves filled with rich cream cheese coated with a light, crispy potato flake breading.

Code 30005620
Type Breaded
Cut Size NA
Case Pack 4/4 lb.



Anchor® Poppers® Breaded Red Hot Chili Cream Cheese Stuffed Jalapeños 4X4 LB



Fiery jalapeño pepper halves filled with rich cream cheese and covered in a spicy, crisp potato flake crust.

Code 30007470
Type Breaded
Cut Size NA
Case Pack 4/4 lb.



Anchor® Poppers® Ovenable Breaded Cheddar Cheese Stuffed Jalapeños 6X2 LB



Mild jalapeños cut into halves and filled with creamy cheddar, before finished with a light, potato flake breading for crispness.

Code 30007975
Type Breaded
Cut Size NA
Case Pack 6/2 lb.



Anchor® Poppers® Ovenable Breaded Cream Cheese Jalapeños 6X2 LB



Flavorful mild jalapeño pepper halves stuffed with cream cheese and lightly breaded for crispness with crunchy potato flakes.

Code 30007962
Type Breaded
Cut Size NA
Case Pack 6/2 lb.



Anchor® Poppers® Breaded Cheddar Cheese & Jalapeño Popper® Bites 6X2.5 LB



Spicy, diced jalapeños bursting with full-flavored cheddar cheese and coated with a light, crispy potato flake breading.

Code 50010132
Type Breaded
Cut Size NA
Case Pack 6/2.5 lb.



In the early 1990s, Anchor® Poppers® changed appetizer menus with an innovative and exciting new addition that's still a fan favorite today.

CRAFT BEER SPICY FLAVOR HOMESTYLE APPEARANCE

BAKE-CONVENTIONAL BAKE-CONVECTION DEEP FRY GRIDDLE STOVETOP STEAMER MICROWAVE K-12





JALAPEÑO BOTTLE CAP BEER-CHEESE FONDUE: Spicy craft beer battered jalapeño slices pair perfectly with smooth and savory craft beer-cheese fondue.
Brew City® Beer Battered Jalapeño Bottle Caps® 6X2.5 LB (70010518)



Anchor® Ovenable Breaded Cream Cheese Jalapeño Bites 6X2.5 LB



Diced, spicy jalapeño peppers enveloped in rich, velvety cream cheese and lightly breaded in bite-sized, golden crisp pieces.

Code 50010131
 Type Breaded
 Cut Size NA
 Case Pack 6/2.5 lb.



Anchor® Breaded Poblano & Jalapeño Popper® Bites 2X4 LB



Poblanos and jalapeños diced with Asadero and mozzarella, loaded with corn and black beans, and stuffed into a crispy breading.

Code 30011027
 Type Breaded
 Cut Size NA
 Case Pack 2/4 lb.



Brew City® Beer Battered Jalapeño Bottle Caps® 6X2.5 LB



Hot and spicy, red and green jalapeño slices bathed in our premium craft beer batter and cooked until golden crisp.

Code 70010518
 Type Battered
 Cut Size NA
 Case Pack 6/2.5 lb.



Golden Crisp® Breaded Cheddar Cheese Stuffed Jalapeños 4X3 LB



Zesty jalapeño halves bursting with creamy cheddar cheese, coated with a light, crispy potato breading.

Code 80008404
 Type Breaded
 Cut Size NA
 Case Pack 4/3 lb.



Golden Crisp® Breaded Cream Cheese Stuffed Jalapeños 4X3 LB



Deliciously mild jalapeños cut into halves, packed with rich cream cheese and coated with a potato breading for golden crispness.

Code 80008409
 Type Breaded
 Cut Size NA
 Case Pack 4/3 lb.



Golden Crisp® Ovenable Breaded Cheddar Cheese Stuffed Jalapeños 6X2 LB



Zesty jalapeño halves bursting with creamy cheddar cheese and coated with a light, crispy potato breading.

Code 80010551
 Type Breaded
 Cut Size NA
 Case Pack 6/2 lb.



Golden Crisp® Ovenable Breaded Cream Cheese Stuffed Jalapeños 6X2 LB



Stuffed jalapeño pepper halves filled with cream cheese and lightly coated with a crunchy breading.

Code 80010550
 Type Breaded
 Cut Size NA
 Case Pack 6/2 lb.



CRAFT BEER SPICY FLAVOR HOMESTYLE APPEARANCE

BAKE-CONVENTIONAL BAKE-CONVECTION DEEP FRY GRIDDLE STOVETOP STEAMER MICROWAVE K-12



APPETIZERS | VEGETABLES

GARDEN VEGGIE PLATTER: Cheddar jalapeño corn bites and crunchy battered green beans are tossed in a garlic butter with a side of bacon-infused sour cream.
Anchor® Battered Spicy Jalapeño Cheddar Corn Nuggets 4X3 LB (1000002784) | **Anchor® Battered Crispy Green Beans 4X2 LB (50010917)**

The perfect balance of wholesome vegetable appeal and flat-out appetizer indulgence, fried vegetable appetizers are sprouting up on menus across foodservice. Whether you serve crispy, golden mushrooms, cauliflower or green beans, a premium menu price is yours for the asking.

Cauliflower

Cauliflower is one of the “it” veggies on menus in the last few years. Get in on the profits and guest demand with these battered and breaded varieties.

Anchor® Battered Cauliflower 6X3 LB

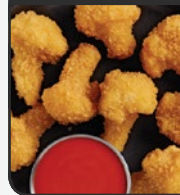


Cauliflower florets dipped in a light, black pepper-flecked batter and cooked until crisp.

Code 50010145
 Type Battered
 Cut Size NA
 Case Pack 6/3 lb.



Anchor® Breaded Cauliflower 6X3 LB



Cauliflower florets rolled in a crisp cheddar cheese batter and Japanese-style breadcrumbs.

Code 50010143
 Type Breaded
 Cut Size NA
 Case Pack 6/3 lb.



Golden Crisp® Battered Cauliflower 6X2 LB



Cauliflower florets dipped in a light, crispy batter you'll remember long after they're gone.

Code 80008418
 Type Battered
 Cut Size NA
 Case Pack 6/2 lb.



Corn Nuggets

A side of corn is good. A side of batter-dipped corn nuggets is better. Charge a premium and serve these nuggets as sides, appetizers or unique toppers for salads and even sandwiches.

Anchor® Battered Spicy Jalapeño Cheddar Corn Nuggets 4X3 LB



A euphoric combo of fire-roasted corn, jalapeños, red peppers and velvety cheddar, all wrapped in crispy cornmeal batter.

Code 1000002784
 Type Battered
 Cut Size NA
 Case Pack 4/3 lb.



Golden Crisp® Battered Sweet Corn Nuggets 6X2 LB



Grade A, creamed sweet corn coated with an indulgent crispy batter for a delicious new taste experience.

Code 80008428
 Type Battered
 Cut Size NA
 Case Pack 6/2 lb.



Green Beans

Dipped in a light batter, these craveable green beans convince even the most veggie-phobic guests to eat something green.

Anchor® Battered Crispy Green Beans 4X2 LB



Tender, petite green beans seasoned in a crispy light batter for an outrageously delicious spin on comfort food.

Code 50010917
 Type Battered
 Cut Size NA
 Case Pack 4/2 lb.



CRAFT BEER SPICY FLAVOR HOMESTYLE APPEARANCE

BAKE-CONVENTIONAL BAKE-CONVECTION DEEP FRY GRIDDLE STOVETOP STEAMER MICROWAVE K-12





SPICY MUSHROOM DIPPERS: Crispy breaded mushrooms paired with a spicy peanut sauce.
Anchor® Breaded Mushrooms 6X2.5 LB (50010138)

Mushrooms

Give 'shroom lovers their fix of crispy, golden deliciousness with breaded, battered or flavorful beer battered options with real craft beer in the batter.

Anchor® Battered Mushrooms 6X2.5 LB



Whole mushrooms dipped in a golden batter and cooked until crispy on the outside and tender and juicy on the inside.

Code 50010141
Type Battered
Cut Size NA
Case Pack 6/2.5 lb.



Anchor® Breaded Garlic Mushrooms 4X4 LB



Whole, garlic-marinated mushrooms in a gourmet crumb breading—crispy on the outside, tender and juicy on the inside.

Code 50010156
Type Breaded
Cut Size NA
Case Pack 4/4 lb.



Anchor® Breaded Mushrooms 6X2.5 LB



Button mushrooms with a light butter breading, fried until crispy on the outside and tender and juicy on the inside.

Code 50010138
Type Breaded
Cut Size NA
Case Pack 6/2.5 lb.



Anchor® Breaded Mushrooms 6X3 LB



Whole button mushrooms with a light breading, fried until crunchy on the outside and tender and juicy on the inside.

Code 50010460
Type Breaded
Cut Size NA
Case Pack 6/3 lb.



Brew City® Beer Battered Mushrooms 8X2.5 LB



Fresh button mushrooms double-dipped in premium craft beer batter for unforgettable flavor, and then fried until crisp.

Code 70004012
Type Battered
Cut Size NA
Case Pack 8/2.5 lb.



Golden Crisp® Battered Button Mushrooms 3X2.2 LB



Whole mushrooms rolled in a golden batter and cooked until crispy on the outside, and tender and juicy on the inside.

Code 80010169
Type Battered
Cut Size NA
Case Pack 3/2.2 lb.



Golden Crisp® Battered Mushroom Halves 6X2 LB



Button mushroom halves with a light crispy batter. Crunchy on the outside, tender and flavorfully juicy on the inside.

Code 80008375
Type Battered
Cut Size NA
Case Pack 6/2 lb.



Golden Crisp® Battered Whole Mushrooms 6X2 LB



Whole button mushrooms dunked in our light, tasty batter. Crispy outside and tender and juicy inside.

Code 80008473
Type Battered
Cut Size NA
Case Pack 6/2 lb.



Golden Crisp® Breaded Homestyle Whole Mushrooms 6X2 LB



Fresh, whole button mushrooms coated in our seasoned American breadcrumbs and fried until crunchy on the outside.

Code 80008439
Type Breaded
Cut Size NA
Case Pack 6/2 lb.



McCain® Grabitizers® Breaded Mushrooms 6X2 LB



Whole mushrooms coated in our crunchy breading and fried until crispy on the outside and juicy on the inside.

Code 96110724
Type Breaded
Cut Size NA
Case Pack 6/2 lb.



CRAFT BEER SPICY FLAVOR HOMESTYLE APPEARANCE

BAKE-CONVENTIONAL BAKE-CONVECTION DEEP FRY GRIDDLE STOVETOP STEAMER MICROWAVE K-12





SPICY PICKLE FRIES WITH SAUCE: For an easy, instant hit, pair spicy pickle fries with an interesting sauce like this horseradish-ale sauce.
Anchor® 3/8" Battered Spicy Pickle Fries 4X3 LB (1000005137)

Pickles

On menus everywhere, fried pickles have become quite a "thing." Make yours distinctive with an interesting cut, a kick of heat or the flavor of real beer in the batter.

Anchor® 3/8" Battered Spicy Pickle Fries 4X3 LB



Crispy, tangy dill pickle fries are lightly coated in cornmeal and a spicy mustard batter for a taste you won't forget.

Code 1000005137
Type Battered
Cut Size NA
Case Pack 4/3 lb.



Anchor® Breaded Dill Pickle Spears 4X4 LB



Tangy dill pickles lightly coated for crisp texture with a crunchy dill-infused breading and served irresistibly hot.

Code 50010153
Type Breaded
Cut Size NA
Case Pack 4/4 lb.



Brew City® Beer Battered Spicy Pub Pickles 6X2.5 LB

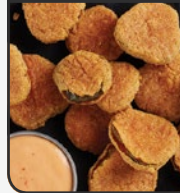


Crisp dill pickle spears lightly coated in our premium beer batter and spicy seasoning and served irresistibly hot.

Code 70003188
Type Battered
Cut Size NA
Case Pack 6/2.5 lb.



Golden Crisp® Breaded Original Pickle Chips 6X2.5 LB



Tangy, crinkle-cut dill pickle chips in a light cornmeal breading with a hint of spice. Served divinely hot and crisp.

Code 80010911
Type Breaded
Cut Size NA
Case Pack 6/2.5 lb.



Zucchini

Offer the star of summer gardens in a wide variety of profitable breaded or battered forms year round. Available carefully crafted in a beer batter variety too.

Anchor® Battered Zucchini Sticks 6X2.5 LB

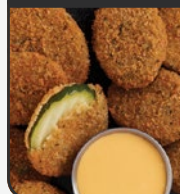


Long, hearty slices of zucchini covered in a light, black pepper-flecked batter, golden browned to a sizzling delight.

Code 50010151
Type Battered
Cut Size NA
Case Pack 6/2.5 lb.



Anchor® Breaded Zucchini Slices 6X2.5 LB



Tender sliced zucchini dipped in Italian-style cheese and bread crumbs, flash-fried and served at peak deliciousness.

Code 50010149
Type Breaded
Cut Size NA
Case Pack 6/2.5 lb.



Anchor® Italian Breaded Zucchini Sticks 4X3.5 LB



Carefully selected, ripe zucchini coated with Italian cheese and delicately seasoned bread crumbs, fried until crisp.

Code 50005800
Type Breaded
Cut Size NA
Case Pack 4/3.5 lb.



Brew City® Beer Battered Zucchini Slices 8X3 LB

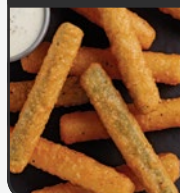


Oval-sliced fresh zucchini covered in our premium craft beer batter, cooked until crisp and served piping hot.

Code 70004011
Type Battered
Cut Size NA
Case Pack 8/3 lb.



Golden Crisp® Battered Zucchini Sticks 6X2 LB



Long, hearty slices of zucchini lavishly lathered in our crispy batter and precisely browned until golden.

Code 80008455
Type Battered
Cut Size NA
Case Pack 6/2 lb.



CRAFT BEER SPICY FLAVOR HOMESTYLE APPEARANCE

BAKE-CONVENTIONAL BAKE-CONVECTION DEEP FRY GRIDDLE STOVETOP STEAMER MICROWAVE K-12



APPETIZERS | SPECIALTY

FRENCH TOAST STICKS WITH BLUEBERRY MAPLE SYRUP: French Toast Sticks are the ultimate on-the-go indulgence with blueberry syrup for dipping. **Grabitzers™ Battered French Toast Stick 5X2 LB (96110844)**



Anchor® Spin Dippers® Spinach & Artichoke Specialty Dip 36X6 OZ



Spinach, artichoke hearts, garlic cream cheese, sour cream and bacon blended with mozzarella cheese and a creamy Parmesan cheese sauce.

Code 57510424
Type NA
Cut Size NA
Case Pack 36/6 oz.



Golden Crisp® Breaded Italian Cheese Ravioli 6X3 LB



Mouthwatering ravioli liberally filled with ricotta cheese and coated in our crunchy Italian breading.

Code 80004319
Type Breaded
Cut Size NA
Case Pack 6/3 lb.



Keep things interesting and your menu buzz-worthy with starters, snacks and even breakfast-inspired items that defy the norm.



McCain® Grabitzers™ Battered Whole Wheat French Toast Sticks 5X2 LB



These whole wheat French toast sticks are dipped in a light batter, cooked to perfection and ready to be dunked.

Code 1000001261
Type Battered
Cut Size NA
Case Pack 5/2 lb.



McCain® Grabitzers™ Battered French Toast Sticks 5X2 LB



Perfectly dunkable sticks of soft, sweet French toast. Dipped in a traditional batter.

Code 96110844
Type Battered
Cut Size NA
Case Pack 5/2 lb.



McCain® Grabitzers™ Battered Southern Style Hushpuppies 6X2 LB



Authentic, Southern-style hushpuppies. Made with cornmeal, chopped onions, parsley, sugar and spices. Served crispy hot.

Code 96110846
Type Battered
Cut Size NA
Case Pack 6/2 lb.



Breakfast Anytime Sells.

Consumers, especially millennials, like breakfast whenever and wherever they want it. Grabitzers® Battered French Toast Sticks are perfect grab-and-go breakfasts or snacks they'll want to buy all day.



McCain® Wrappetizers™ Santa Fe Chicken Eggroll 1X15 LB



Perfectly seasoned chicken, corn, black beans and chopped peppers rolled into irresistibly crunchy tortilla wraps.

Code 37510419
Type NA
Cut Size NA
Case Pack 1/15 lb.



McCain® Wrappetizers™ Mesquite Chicken Quesadilla Rolls 4X4 LB



Sizzling, smoky mesquite chicken layered with melted Monterey Jack and wrapped in crisp, flour tortillas for pure bliss.

Code 37508170
Type NA
Cut Size NA
Case Pack 4/4 lb.



CRAFT BEER SPICY FLAVOR HOMESTYLE APPEARANCE

BAKE-CONVENTIONAL BAKE-CONVECTION DEEP FRY GRIDDLE STOVETOP STEAMER MICROWAVE K-12





DIPS AHoy! FIRE ROASTED PEPPER KETCHUP: A fire roasted pepper ketchup for dipping with real Wisconsin cheese curds and the fiery heat of our unique spicy breading. **Anchor® Spicy Breaded Wisconsin Cheese Curds 2 x 5 LB (1000007891)**



The True Beer Food™ App

With 71% of bar and restaurant consumers looking for craft beer choices that accentuate the flavor of their food*, the time is right to get in on the pairings trend.

Our convenient mobile app lets you choose a style of beer (e.g., pale ale or lager) to learn about its flavor qualities as well as get craft-beer-friendly product suggestions and menu ideas using McCain®, Brew City® and Anchor® appetizers and potatoes. You'll also find links to merchandising specifically for your craft beer pairings program.

*Nielsen Craft Beer Insights Poll (CP), June 2017



PRODUCT SPECS: POTATOES

Product Information						Packaging			Preparation		
Code Number	Product Description	Fry Length	Cut Size	Skin-On	K-12	Case (lb.)			Cooking Method	Temp (°F)	Time (Minutes)
						Weight	Net	Gross			
BATTERED & COATED FRIES											
Clear Coated											
MCF05073	McCain® SureCrisp™ Skin-On Julienne Fries 3/16" XL	XL	3/16"	X		6/5 lb.	30	31.95	Deep Fry	350	2-1/2 to 3
									Bake–Convection	425	7 to 11
MCF03789	McCain® SureCrisp™ Shoestring Fries 1/4" + PXL	PXL	1/4" +			6/5 lb.	30	31.75	Deep Fry	350	2-1/2 to 3
									Bake–Convection	425	7 to 11
MCF03786	McCain® SureCrisp™ Shoestring Fries 1/4" PXL	PXL	1/4"		X	6/5 lb.	30	31.79	Deep Fry	350	2-1/2 to 3
									Bake–Convection	425	7 to 11
1000000709	McCain® SureCrisp™ Skin-On Shoestring Fries 1/4" PXL	PXL	1/4"	X		6/5 lb.	30	31.79	Deep Fry	350	2-1/2 to 3
									Bake–Convection	425	7 to 11
MCF03785	McCain® SureCrisp™ Thin Fries 5/16" + PXL	PXL	5/16" +			6/5 lb.	30	31.73	Deep Fry	350	3 to 3-1/2
									Bake–Convection	425	9 to 13
MCF03790	McCain® SureCrisp™ Thin Fries 5/16" PXL	PXL	5/16"			6/5 lb.	30	31.85	Deep Fry	350	2-1/2 to 3
									Bake–Convection	425	8 to 12
MCF03791	McCain® SureCrisp™ Skin-On Thin Fries 5/16" PXL	PXL	5/16"	X		6/5 lb.	30	31.75	Deep Fry	350	2-1/2 to 3
									Bake–Convection	425	8 to 12
1000001354	McCain® SureCrisp™ Skin-On Waffle Fries	NA	Waffle	X		6/4.5 lb.	27	28.81	Deep Fry	350	2-3/4 to 3-1/4
									Bake–Convection	425	10 to 14
MCF03783	McCain® SureCrisp™ Regular Crinkle Fries 3/8" PXL	PXL	3/8"			6/5 lb.	30	31.85	Deep Fry	350	3 to 3-1/2
									Bake–Convection	425	9 to 13
MCF03788	McCain® SureCrisp™ Regular Fries 3/8" PXL	PXL	3/8"			6/5 lb.	30	31.69	Deep Fry	350	3 to 3-1/2
									Bake–Convection	425	9 to 13
MCF03787	McCain® SureCrisp™ Skin-On Regular Fries 3/8" PXL	PXL	3/8"	X		6/5 lb.	30	31.60	Deep Fry	350	3 to 3-1/2
									Bake–Convection	425	9 to 13
Light Battered											
1000000723	McCain Ultimate® Crispy Coated Skin-On Julienne Fries 3/16" XL	XL	3/16"	X		6/5 lb.	30	31.90	Deep Fry	350	1-3/4 to 2
									Bake–Convection	425	7 to 11
OIF01027A	Ore-Ida® EverCrisp™ Shoestring Fries 1/4" XL	XL	1/4"			6/5 lb.	30	31.81	Deep Fry	350	2-1/2 to 3
									Bake–Convection	425	7 to 11
MCX89	McCain Ultimate® Crispy Coated Skin-On Spiral Fries	NA	Spiral	X		6/4 lb.	24	25.56	Deep Fry	350	2-1/2 to 3
									Bake–Convection	425	10 to 14
MCX121	McCain Ultimate® Crispy Coated Skin-On Thin Fries 5/16" XL	XL	5/16"	X		6/5 lb.	30	31.73	Deep Fry	350	2-1/2 to 3
									Bake–Convection	425	8 to 12
OIF01028A	Ore-Ida® EverCrisp™ Thin Regular Fries 5/16" X 3/8" XL	XL	5/16" X 3/8"		X	6/5 lb.	30	31.75	Deep Fry	350	2-3/4 to 3-1/4
									Bake–Convection	425	9 to 13
MCX239	McCain Ultimate® Crispy Coated Skin-On Waffle Fries	NA	Waffle	X		6/4.5 lb.	27	28.87	Deep Fry	350	2-1/4 to 2-3/4
									Bake–Convection	425	10 to 14
MCF03761	McCain® Bakeable Regular Crinkle Fries 3/8" L	L	3/8"		X	6/5 lb.	30	31.86	Deep Fry	350	2-1/2 to 3
									Bake–Convection	425	9 to 13
MCF03762	McCain® Bakeable Regular Fries 3/8" XL	XL	3/8"		X	6/5 lb.	30	31.83	Deep Fry	350	2-1/2 to 3
									Bake–Convection	425	8 to 13
MCX49	McCain Ultimate® Crispy Coated Skin-On Regular Fries 3/8" XL	XL	3/8"	X	X	6/5 lb.	30	31.75	Deep Fry	350	3 to 3-1/2
									Bake–Convection	425	9 to 13
MCX91	McCain Ultimate® Crispy Coated Skin-On Thin 10-Cut Wedges	NA	10-Cut Wedge	X		6/5 lb.	30	31.71	Deep Fry	350	3-1/4 to 3-3/4
									Bake–Convection	425	9 to 13
Heavy Battered											
1000004508	McCain® Extra Crispy Shoestring Fries 1/4" L	L	1/4"			6/5 lb.	30	31.73	Deep Fry	350	2-1/4 to 2-3/4
									Bake–Convection	425	12 to 16
1000001223	McCain® Extra Crispy Regular Fries 3/8" L	L	3/8"			6/5 lb.	30	31.70	Deep Fry	350	3-1/4 to 3-3/4
									Bake–Convection	400	11 to 13
CHIPS, ROASTED & MASHED											
Flat & Ridge Chips											
MCX05006	McCain® Fresh-Style Skin-On Flat Chips	NA	Flat Chip	X		6/4 lb.	24	25.88	Deep Fry	350	2-3/4 to 3-1/4
MCX244	McCain® Fresh-Style Skin-On Ridge Chips	NA	Ridge Chip	X		6/4 lb.	24	25.80	Deep Fry	350	2-1/4 to 2-3/4



Product Information						Packaging			Preparation		
Code Number	Product Description	Fry Length	Cut Size	Skin-On	K-12	Case (lb.)			Cooking Method	Temp (°F)	Time (Minutes)
						Weight	Net	Gross			
CHIPS, ROASTED & MASHED											
Chopped, Diced & Cubed											
MCF04812	McCain® Chopped Seasoned Skin-On Half Cut Roasted Redskin [Garlic, Rosemary & Herb]	NA	Chopped Dice	X		4/3 lb.	12	12.82	Bake–Convection	400	17 to 19
MCF03927	McCain® Chopped Seasoned Skin-On Roasted Potato [Garlic, Rosemary & Herb]	NA	Chopped Dice	X		6/5 lb.	30	31.65	Bake–Convection	375	10 to 12
MCF04851	McCain® Chopped Seasoned Skin-On Roasted Redskin [Garlic, Rosemary & Herb]	NA	Chopped Dice	X		4/4 lb.	16	17.22	Bake–Convection	400	15 to 17
OIF00335A	McCain® Skin-On Hash Brown Cubes 3/8" X 3/4" X 3/4"	NA	Cube	X		6/6 lb.	36	37.87	Deep Fry	350	2-3/4 to 3-1/4
									Bake–Convection	425	12 to 14
									Griddle	350	13 to 16
OIF252A	McCain® Hash Brown Cubes 3/4" X 1" X 5/8"	NA	Cube			6/5 lb.	30	31.58	Deep Fry	350	2-3/4 to 3-1/4
									Bake–Convection	425	12 to 14
									Griddle	350	13 to 16
MCS302	McCain Signature® Skin-On Hash Brown Cubes 3/4" X 1" X 5/8"	NA	Cube	X		6/5 lb.	30	31.57	Deep Fry	350	3-1/2 to 4
									Bake–Convection	425	11 to 15
									Griddle	350	13 to 16
MCL03624	McCain® Redstone Canyon® Skin-On Hash Brown Cubes 3/4" X 1" X 5/8"	NA	Cube	X		6/5 lb.	30	31.59	Deep Fry	350	3 to 3-1/2
									Bake–Convection	425	12 to 14
									Griddle	350	13 to 16
Mashed											
OIF03613	McCain® Seasoned Skin-Off Homestyle Mashed Potatoes	NA	Mash		X	6/4 lb.	24	24.00	Stove Top	Boiling	25 to 30
									Microwave	High	15 to 18
OIF03631	McCain® Unseasoned Skin-On Redskin Mashed Potatoes	NA	Mash	X		6/4 lb.	24	24.00	Stove Top	Boiling	25 to 30
									Microwave	High	10 to 13
1000002870	McCain® Reduced Sodium Skin-Off Homestyle Mashed Potatoes	NA	Mash		X	6/4 lb.	24	25.08	Steamer	NA	30 to 35
									Stove Top	Boiling	25 to 30
CLASSIC UNCOATED											
Fresh-Style											
MCX05156	McCain® Fresh-Style Skin-On Thin Fries 5/16"	NA	5/16"	X		6/5 lb.	30	31.66	Deep Fry	350	3-1/4 to 3-3/4
MCX05158	McCain® Fresh-Style Skin-On Regular Fries 3/8"	NA	3/8"	X		6/5 lb.	30	31.65	Deep Fry	350	3-1/2 to 4
MCX05157	McCain® Fresh-Style Skin-On Regular Fries 3/8" Water Blanched	NA	3/8"	X		6/5 lb.	30	31.62	Deep Fry	350	4-3/4 to 5-1/4
XL											
1000000725	McCain Signature® Skin-On Julienne Fries 3/16" XL	Brined XL	3/16"	X		6/5 lb.	30	32.00	Deep Fry	350	2-1/2 to 3
									Bake–Convection	425	8 to 12
MCX01	McCain® Shoestring Fries 1/4" XL	XL	1/4"		X	6/4.5 lb.	27	28.78	Deep Fry	350	2-1/2 to 3
									Bake–Convection	425	7 to 11
OIF00236A	McCain® Skin-On Thin Fries 5/16" XL	XL	5/16"	X		6/5 lb.	30	31.75	Deep Fry	350	2-1/2 to 3
MCX20	McCain® Thin Fries 5/16" XL	XL	5/16"			6/5 lb.	30	31.87	Deep Fry	350	2-1/2 to 3
									Bake–Convection	425	8 to 12
MCX30	McCain® Thin Crinkle Fries 5/16" XL	XL	5/16"			6/5 lb.	30	31.91	Deep Fry	350	2-1/2 to 3
MCX40	McCain® Regular Fries 3/8" XL	XL	3/8"		X	6/5 lb.	30	31.71	Deep Fry	350	3 to 3-1/2
									Bake–Convection	425	9 to 13
OIF00276A	McCain® Skin-On Regular Fries 3/8" XL	XL	3/8"	X		6/5 lb.	30	31.22	Deep Fry	350	3 to 3-1/2
MCX50	McCain® Regular Crinkle Fries 3/8" XL	XL	3/8"			6/5 lb.	30	31.60	Deep Fry	350	3 to 3-1/2
1000000724	McCain® Thick Deep Crinkle Fries 1/2" XL	XL	1/2"			6/5 lb.	30	31.76	Deep Fry	350	3 to 3-1/2
MCX60	McCain® Thick Crinkle Fries 1/2" XL	XL	1/2"			6/5 lb.	30	31.77	Deep Fry	350	3 to 3-1/2
OIF00055A	McCain® Bakeable Thick Crinkle Fries 1/2"	NA	1/2"		X	6/5 lb.	30	31.83	Bake–Convection	425	10 to 14
MCX75	McCain® Steak Fries 3/8" X 3/4" XL	XL	3/8" X 3/4"			6/5 lb.	30	31.68	Deep Fry	350	3-1/2 to 4
PXL											
MCG03	McCain® Shoestring Fries 1/4" PXL	PXL	1/4"			6/4.5 lb.	27	28.60	Deep Fry	350	2-1/2 to 3
MCS110	McCain Signature® Skin-On Shoestring Fries 1/4" PXL	Brined PXL	1/4"	X		6/4.5 lb.	27	28.64	Deep Fry	350	2-1/2 to 3
									Bake–Convection	425	7 to 11
MCG20	McCain® Thin Fries 5/16" PXL	PXL	5/16"			6/5 lb.	30	31.75	Deep Fry	350	2-1/2 to 3
MCG30	McCain® Thin Crinkle Fries 5/16" PXL	PXL	5/16"			6/5 lb.	30	31.79	Deep Fry	350	2-1/2 to 3



Product Information						Packaging			Preparation		
Code Number	Product Description	Fry Length	Cut Size	Skin-On	K-12	Case (lb.)			Cooking Method	Temp (°F)	Time (Minutes)
						Weight	Net	Gross			
CLASSIC UNCOATED											
PXL (cont.)											
MCS125	McCain Signature® Skin-On Thin Fries 5/16" PXL	Brined PXL	5/16"	X		6/5 lb.	30	31.58	Deep Fry	350	2-1/2 to 3
									Bake—Convection	425	8 to 12
MCS140	McCain Signature® Skin-On Regular Fries 3/8" PXL	Brined PXL	3/8"	X	X	6/5 lb.	30	31.71	Deep Fry	350	3 to 3-1/2
									Bake—Convection	425	9 to 13
MCG40	McCain® Regular Fries 3/8" PXL	PXL	3/8"			6/5 lb.	30	31.74	Deep Fry	350	3 to 3-1/2
MCG60	McCain® Thick Crinkle Fries 1/2" PXL	PXL	1/2"			6/5 lb.	30	31.60	Deep Fry	350	3 to 3-1/2
MCS03691	McCain Signature® Skin-On Thick Fries 1/2" PXL	Brined PXL	1/2"	X		6/5 lb.	30	31.66	Deep Fry	350	3 to 3-1/2
									Bake—Convection	425	10 to 14
MCG75	McCain® Steak Fries 3/8" X 3/4" PXL	PXL	3/8" X 3/4"			6/5 lb.	30	31.54	Deep Fry	350	3-1/2 to 4
MCS75	McCain Signature® Skin-On Steak Fries 3/8" X 3/4" PXL	Brined PXL	3/8" X 3/4"	X		6/5 lb.	30	31.71	Deep Fry	350	3-1/2 to 4
									Bake—Convection	425	11 to 15
Specialty Cuts											
MCS90	McCain Signature® Skin-On Spiral Fries	NA	Spiral	X		6/4 lb.	24	25.72	Deep Fry	350	2-1/4 to 2-3/4
									Bake—Convection	425	10 to 14
OIF01038A	McCain® Skin-On Spiral Fries	NA	Spiral	X		6/4 lb.	24	25.69	Deep Fry	350	2-1/4 to 2-3/4
									Bake—Convection	425	10 to 14
OIF01037A	McCain® Skin-On Waffle Fries	NA	Waffle	X		6/4.5 lb	27	28.72	Deep Fry	350	2-1/4 to 2-3/4
									Bake—Convection	425	10 to 14
OIF00880A	McCain® Skin-On Thin 10-Cut Wedges	NA	10-Cut Wedge	X	X	6/5 lb.	30	31.56	Deep Fry	350	3-1/4 to 3-3/4
									Bake—Convection	425	9 to 13
OIF00024A	McCain® Skin-On Regular 8-Cut Wedges	NA	8-Cut Wedge	X	X	6/5 lb.	30	31.61	Deep Fry	350	3-1/2 to 4
									Bake—Convection	425	10 to 14
FORMED POTATOES & SPECIALTY											
Tots, Rounds, Triangles & Ovals											
1000006007	McCain® Seasoned Tots [Buffalo]	NA	Tot			6/5 lb.	30	31.70	Deep Fry	350	2-1/2 to 3
									Bake—Convection	425	8 to 12
1000006008	McCain® Seasoned Tots [Ranch]	NA	Tot			6/5 lb.	30	31.70	Deep Fry	350	2-1/2 to 3
									Bake—Convection	425	8 to 12
1000006009	McCain® Seasoned Tots [Sea Salt & Black Pepper]	NA	Tot			6/5 lb.	30	31.70	Deep Fry	350	2-1/2 to 3
									Bake—Convection	425	8 to 12
1000002789	Ore-Ida® Reduced Sodium Tater Tots®	NA	Tot		X	6/5 lb.	30	31.72	Deep Fry	350	2-1/2 to 3
									Bake—Convection	425	12 to 17
OIF00215A	Ore-Ida® Tater Tots®	NA	Tot		X	6/5 lb.	30	31.70	Deep Fry	350	2-1/2 to 3
									Bake—Convection	425	12 to 17
1000006188	McCain® Hash Brown Rounds	NA	Hash Brown Round		X	6/5 lb.	30	31.70	Bake—Convection	425	14 to 20
OIF00093A	Ore-Ida® Spud Bites™ Round Bites	NA	Bite			6/5 lb.	30	31.22	Deep Fry	350	2-1/2 to 3
									Bake—Convection	425	8 to 12
OIF00049A	Ore-Ida® Hash Brown Triangles	NA	Triangle—2 oz.			6/5 lb.	30	31.70	Deep Fry	350	2-1/2 to 3
									Bake—Convection	425	10 to 15
OIF00589A	Ore-Ida® Hash Brown Ovals	NA	Oval—2.25 oz.			6/2.8125 lb.	16.9	18.15	Deep Fry	350	2-1/2 to 3
									Bake—Convection	425	10 to 15
Hash Browns											
OIF00224A	Ore-Ida® IQF Hash Brown Shreds Thin	NA	Shred—Thin		X	6/3 lb.	18	19.19	Griddle	350	8 to 10
MCS03367	McCain Signature® Hash Brown Shreds Thin	NA	Shred—Thin			6/3 lb.	18	19.38	Griddle	350	8 to 10
MCS04686	McCain Signature® Hash Brown Shreds Thick	NA	Shred—Thick			6/3 lb.	18	19.45	Griddle	350	8 to 10
MCF03758	McCain® BabyCakes® Seasoned Hash Brown Bites	NA	Hash Brown Bite			6/3 lb.	18	19.47	Deep Fry	350	1-3/4 to 2-1/4
									Bake—Convection	425	6 to 9
Smiles®/Emoticons™											
OIF03456	McCain® Smiles® Crispy Mashed Potato Shapes	NA	Mashed Shape		X	6/4 lb.	24	25.58	Deep Fry	350	2 to 2-1/2
									Bake—Convection	425	9 to 13
1000006639	McCain® Emoticons™ Crispy Mashed Potato Shapes	NA	Mashed Shape		X	6/4 lb.	24	25.72	Bake—Convection	425	9 to 13
Handheld Breakfast											
10310688	McCain® Hash Brown Handheld Breakfast [Bacon, Egg & Cheese]	NA	Handheld Oval			4/3.75 lb.	15	17.45	Deep Fry	350	4-3/4 to 5
									Bake—Convection	425	13



Product Information						Packaging			Preparation		
Code Number	Product Description	Fry Length	Cut Size	Skin-On	K-12	Case (lb.)			Cooking Method	Temp (°F)	Time (Minutes)
						Weight	Net	Gross			
SEASONED & FLAVORED FRIES AND WEDGES											
Beer Battered											
BCI00255	Brew City® Beer Battered Thin Fries 5/16" XL	XL	5/16"			6/5 lb.	30	31.77	Deep Fry	350	2-1/2 to 3
									Bake–Convection	425	8 to 12
BCI195	Brew City® Beer Battered Wide Mouth Fries® Waffle Fries	NA	Waffle			6/4.5 lb.	30	28.87	Deep Fry	350	2-1/4 to 2-3/4
									Bake–Convection	425	10 to 14
BCI00256	Brew City® Beer Battered Skin-On Maxi Fries 1/4" X 1/2" XL	XL	1/4" X 1/2"	X		6/5 lb.	30	31.74	Deep Fry	350	2-3/4 to 3-1/4
									Bake–Convection	425	9 to 13
BCI197	Brew City® Beer Battered Bottle Neck Fries® Ridge Steak Fries 3/8" X 3/4" XL	XL	3/8" X 3/4"			6/5 lb.	30	31.71	Deep Fry	350	3-1/2 to 4
									Bake–Convection	425	10 to 14
Savory Red Battered											
MCL03622	McCain® Redstone Canyon® Skin-On Spiral Fries	NA	Spiral	X	X	6/4 lb.	24	25.61	Deep Fry	350	2-1/2 to 3
									Bake–Convection	425	10 to 14
MCX03620	McCain® Redstone Canyon® Skin-On Thin Fries 5/16" XL	XL	5/16"	X	X	6/5 lb.	30	31.76	Deep Fry	350	2-1/2 to 3
									Bake–Convection	425	8 to 12
MCL03623	McCain® Redstone Canyon® Skin-On Waffle Fries	NA	Waffle	X	X	6/4.5 lb.	27	28.89	Deep Fry	350	2-1/4 to 2-3/4
									Bake–Convection	425	10 to 14
MCX03621	McCain® Redstone Canyon® Skin-On Regular Fries 3/8" XL	XL	3/8"	X	X	6/5 lb.	30	31.62	Deep Fry	350	3 to 3-1/2
									Bake–Convection	425	9 to 13
MCX03627	McCain® Redstone Canyon® Skin-On Thin 10-Cut Wedges	NA	10-Cut Wedge	X		6/5 lb.	30	31.77	Deep Fry	350	3-1/4 to 3-3/4
									Bake–Convection	425	9 to 13
MCX03626	McCain® Redstone Canyon® Skin-On Regular 8-Cut Wedges	NA	8-Cut Wedge	X	X	6/5 lb.	30	31.55	Deep Fry	350	3-1/2 to 4
									Bake–Convection	425	10 to 14
MCX03625	McCain® Redstone Canyon® Skin-On Thick 6-Cut Wedges	NA	6-Cut Wedge	X		6/5 lb.	30	31.77	Deep Fry	350	4-1/4 to 4-3/4
									Bake–Convection	425	12 to 15
Crispy Bakeable											
1000004108	McCain® Crispy Bakeable Seasoned Spirals	NA	Spiral		X	6/4 lb.	24	25.54	Deep Fry	350	2-1/2 to 3
									Bake–Convection	425	13 to 15
MCX04717	McCain® Crispy Bakeable Seasoned Skin-On Thick Fries 1/2" XL	XL	1/2"	X	X	6/5 lb.	30	31.80	Bake–Convection	425	10 to 14
1000000496	McCain® Crispy Bakeable Seasoned Skin-On Regular 8-Cut Wedges	NA	8-Cut Wedge	X	X	6/5 lb.	30	31.77	Deep Fry	350	3-1/2 to 4
									Bake–Convection	350	20 to 25
Savory Seasoned											
MCX66004	McCain® Savory Seasoned [Garlic & Onion] Skin-On Thin Crinkle 10-Cut Deli Wedges	NA	10-Cut Wedge	X		6/5 lb.	30	31.64	Deep Fry	350	3-1/2 to 3-3/4
									Bake–Convection	425	9 to 13
MCX163	McCain® Savory Seasoned [Garlic & Onion] Skin-On Regular Crinkle 8-Cut Deli Wedges	NA	8-Cut Wedge	X		6/5 lb.	30	31.08	Deep Fry	350	3-1/2 to 4
									Bake–Convection	425	10 to 14
SWEET POTATOES											
MCF05004	McCain® Harvest Splendor® Sweet Potato Slim Fries 7/32" X 3/8" XL	XL	7/32" X 3/8"	X		6/5 lb.	30	32.05	Deep Fry	350	2-1/2 to 3
									Bake–Convection	425	9 to 13
1000004309	McCain® Harvest Splendor® Savory Seasoned Sweet Potato Regular Fries 5/16" XL	XL	5/16"	X		6/2.5 lb.	15	16.30	Deep Fry	350	3 to 3-1/2
									Bake–Convection	425	32 to 34
MCF03731	McCain® Harvest Splendor® Sweet Potato Thin Fries 5/16" XL	XL	5/16"	X		6/2.5 lb.	15	16.29	Deep Fry	350	2-3/4 to 3-1/4
									Bake–Convection	425	34 to 38
MCF05074	McCain® Harvest Splendor® Sweet Potato Cross Trax®	NA	Waffle	X		6/2.5 lb.	15	16.48	Deep Fry	350	2-1/4 to 3-3/4
									Bake–Convection	425	28 to 30
MCF03725	McCain® Harvest Splendor® Sweet Potato Regular Fries 3/8" XL	XL	3/8"	X		6/2.5 lb.	15	16.26	Deep Fry	350	3 to 3-1/2
									Bake–Convection	425	32 to 34
MCF04965	McCain® Harvest Splendor® Sweet Potato Maxi Fries 1/4" X 1/2" XL	XL	1/4" X 1/2"	X		6/2.5 lb.	15	16.26	Deep Fry	350	2-3/4 to 3-1/4
									Bake–Convection	425	28 to 32
MCF04566	McCain® Harvest Splendor® Sweet Potato Deep Groove Crinkle Fries 7/16" XL	XL	7/16"	X		6/2.5 lb.	15	16.35	Deep Fry	350	2-1/4 to 2-3/4
									Bake–Convection	425	28 to 32
MCF04712	McCain® Harvest Splendor® Sweet Potato Thin Ridge 10-Cut Wedges	NA	10-Cut Wedge	X		6/2.5 lb.	15	16.29	Deep Fry	350	3-1/4 to 3-3/4
									Bake–Convection	425	28 to 32
APPETIZER POTATOES											
1000007410	McCain® Dip'n Wedges™	NA	V-Cut Wedge	X		6/4 lb.	24	24.17	Deep Fry	350	2-3/4 to 3-1/4
									Bake–Convection	425	13
MCX03602	McCain® Potato Skins 3-1/4" to 4-1/4" L	NA	Potato Skin	X	X	4/4.25 lb	17	18.66	Deep Fry	350	2-1/2 to 3
									Bake–Convection	425	6 to 8

PRODUCT SPECS: APPETIZERS

Product Information					Packaging					Preparation		
Code Number	Product Description	Type	Cut Size	K-12	Piece Ct./Lb.	Est. Piece Cost	Case (lb.)			Cooking Method	Temp (°F)	Time (Minutes)
							Weight	Net	Gross			
CHEESE												
Anchor®												
50010129	Anchor® Battered Broccoli & Cheese Bites 6X2.5 LB	Battered	NA		18-26	®0.23	6/2.5 lb.	15	16.20	Deep Fry	350	3 to 3-1/2
										Bake—Convection	450	4-1/4 / side
										Bake—Conventional	450	5-1/4 / side
50010277	Anchor® Breaded Cheddar and Broccoli Bites 6X2.5 LB	Breaded	NA		14-16	®0.34	6/2.5 lb.	15	16.17	Deep Fry	350	3
50010130	Anchor® Battered Chili Pepper Cheese Bites 6X2.5 LB	Battered	NA		18-26	®0.23	6/2.5 lb.	15	16.20	Deep Fry	350	3 to 3-1/2
										Bake—Convection	450	4-1/4 / side
										Bake—Conventional	450	5-1/4 / side
50010128	Anchor® Breaded Cheddar Cheese Cubes 6X3 LB	Breaded	NA		50-66	®0.08	6/3 lb.	18	19.47	Deep Fry	350	2 to 2-1/2
50010119	Anchor® Breaded Hot Pepper Cheese Cubes 6X3 LB	Breaded	NA		48-61	®0.09	6/3 lb.	18	19.47	Deep Fry	350	2 to 2-1/2
50010112	Anchor® Breaded Natural Cheddar Cheese Nuggets 6X3 LB	Breaded	NA		35-70	®0.09	6/3 lb.	18	19.47	Deep Fry	350	2
50010102	Anchor® Breaded Natural White Cheddar Cheese Nuggets 6X3 LB	Breaded	NA		48-87	®0.09	6/3 lb.	18	19.47	Deep Fry	350	1-1/2 to 1-3/4
50010114	Anchor® Battered Cheese Nuggets 6X3 LB	Battered	NA		39-51	®0.11	6/3 lb.	18	19.47	Deep Fry	350	2
										Bake—Convection	450	3 / side
										Bake—Conventional	450	4 / side
1000005885	Anchor® Breaded Wisconsin Cheese Curds 2X5 LB	Breaded	NA		46-62	®0.09	2/5 lb.	10	10.75	Deep Fry	350	2 to 2-1/2
1000007891	Anchor® Spicy Breaded Wisconsin Cheese Curds 2X5 LB	Breaded	NA		46-62	®0.09	2/5 lb.	10	10.75	Deep Fry	350	2
50010116	Anchor® 1-1/2" Breaded Mini Mozzarella Cheese Sticks 6X3 LB	Breaded	1-1/2"		42-54	®0.10	6/3 lb.	18	19.34	Deep Fry	350	1-1/2
50010109	Anchor® 2-3/4" Battered Mozzarella Cheese Sticks 6X2.5 LB	Battered	2-3/4"		12-14	®0.42	6/2.5 lb.	15	16.28	Deep Fry	350	2-1/2 to 3
										Bake—Convection	450	2 / side
										Bake—Conventional	450	4 / side
50003494	Anchor® 3" Breaded Ovenable Mozzarella Cheese Sticks 4X3 LB	Breaded	3"		15-18	®0.32	4/3 lb.	12	13.09	Bake—Convection	450	3 / side
										Bake—Conventional	450	3-1/2 / side
										Deep Fry	350	2-3/4
50010122	Anchor® 3-1/4" Breaded Italian Mozzarella Cheese Sticks 6X3 LB	Breaded	3-1/4"		13-17	®0.33	6/3 lb.	18	19.39	Bake—Conventional	450	5 / side
										Deep Fry	350	2
50006240	Anchor® 3-1/4" Breaded Italian Mozzarella Cheese Sticks 6X4 LB	Breaded	3-1/4"		14-16	®0.34	6/4 lb.	24	25.57	Deep Fry	350	2
50010107	Anchor® 3-1/4" Breaded Italian Mozzarella Sticks 6X4 LB	Breaded	3-1/4"		14-16	®0.35	6/4 lb.	24	25.57	Deep Fry	350	2
50004152	Anchor® 3-1/4" Breaded Mozzarella Cheese Sticks 4X3 LB	Breaded	3-1/4"		15-18	®0.32	4/3 lb.	12	13.10	Deep Fry	350	1-1/2 to 2
50010105	Anchor® 3-1/4" Breaded Italian Mozzarella Cheese Sticks 4X4 LB	Breaded	3-1/4"		14-16	®0.34	4/4 lb.	16	17.18	Deep Fry	350	2
50007400	Anchor® 4" Breaded Primo Mozzà Cheese Sticks 4X4 LB	Breaded	4"		15-18	®0.32	4/4 lb.	16	17.37	Deep Fry	350	1-1/2
45010206	Anchor® 4-1/2" Breaded Garlic Butter Provolone Cheese Sticks 2X4 LB	Breaded	4-1/2"		12-16	®0.37	2/4 lb.	8	8.67	Deep Fry	350	1-1/2
50010335	Anchor® Battered Mac & Cheese Wedges 6X3 LB	Battered	NA		18-20	®0.24	6/3 lb.	18	19.42	Deep Fry	350	2-1/4 to 2-1/2
										Bake—Conventional	450	3-1/2 / side
45010202	Anchor® MozzaLuna® Breaded Mozzarella Cheese 2X4 LB	Breaded	NA		6-10	®0.71	2/4 lb.	8	8.69	Deep Fry	350	1-1/2 to 1-3/4
45010204	Anchor® MozzaMia® Breaded Mozzarella Cheese 2X4 LB	Breaded	NA		13-17	®0.39	2/4 lb.	8	8.98	Deep Fry	350	1-1/4 to 1-1/2
Brew City®												
1000006814	Brew City® IPA Beer Battered Gouda & Mozzarella Cheese Bites 4X3 LB	Battered	NA		22-30	®0.21	4/3 lb.	12	13.04	Deep Fry	350	2-1/2
1000000516	Brew City® Mac 'N Jack Brew Bites™ Beer Battered Mac & Cheese Bites 4X2 LB	Battered	NA		13-17	®0.29	4/2 lb.	8	8.96	Deep Fry	350	3-1/4
70010597	Brew City® Cheddar Pints® Beer Battered Cheddar Cheese Curds 4X3 LB	Battered	NA		30-55	®0.12	4/3 lb.	12	13.08	Deep Fry	350	2-1/4 to 2-3/4
70004007	Brew City® 2" Beer Battered Monterey Jack Cheese Sticks 6X3 LB	Battered	2"		28-33	®0.17	6/3 lb.	18	19.37	Deep Fry	350	2 to 2-1/2
										Bake—Convection	450	2 to 2-1/2 / side
										Bake—Conventional	450	4 to 5 / side
70004008	Brew City® Beer Battered Mozzarella Cheese Sticks 6X3 LB	Battered	NA		16-20	®0.28	6/3 lb.	18	19.39	Deep Fry	350	2
										Bake—Convection	475	1-1/2 to 2 / side
										Bake—Conventional	475	3 to 4 / side
Golden Crisp®												
1000001467	Golden Crisp® Breaded Cheddar Cheese Potato Bites 4X3 LB	Breaded	NA		27-33	®0.07	4/3 lb.	12	13.14	Deep Fry	350	3
										Bake—Convection	450	2-1/2 to 3 / side
1000001488	Golden Crisp® Breaded Jalapeño Cheddar Potato Bites 4X3 LB	Breaded	NA		27-33	®0.07	4/3 lb.	12	13.14	Deep Fry	350	3
										Bake—Convection	450	2-1/2 to 3 / side
80008476	Golden Crisp® Battered Cheese Nuggets 6X2 LB	Battered	NA		40-53	®0.10	6/2 lb.	12	13.13	Deep Fry	350	1-1/2 to 2
80010445	Golden Crisp® Advantage Battered Mozzarella Sticks 6X2 LB	Battered	NA		9-13	®0.34	6/2 lb.	12	13.05	Bake—Conventional	450	3 / side
80008480	Golden Crisp® 2-3/4" Battered Mozzarella Cheese Sticks 6X2 LB	Battered	2-3/4"		11-14	®0.37	6/2 lb.	12	13.13	Deep Fry	350	2
										Deep Fry	350	2-1/2 to 3
										Bake—Convection	450	3-1/2 to 4 / side
80011004	Golden Crisp® 3" Breaded Mozzarella Cheese Sticks 6X2 LB	Breaded	3"		20-25	®0.20	6/2 lb.	12	13.08	Bake—Conventional	450	5-1/2 / side
80007260	Golden Crisp® 3-1/4" Breaded Italian Mozzarella Cheese Sticks 6X2 LB	Breaded	3-1/4"		14-18	®0.28	6/2 lb.	12	13.08	Deep Fry	350	1-1/2 to 1-3/4
										Deep Fry	350	1-1/2 to 2



Product Information					Packaging					Preparation		
Code Number	Product Description	Type	Cut Size	K-12	Piece Ct./Lb.	Est. Piece Cost	Case (lb.)			Cooking Method	Temp (°F)	Time (Minutes)
							Weight	Net	Gross			
Golden Crisp® (cont.)												
80003083	Golden Crisp® 3-1/4" Breaded Ovenable Mozzarella Cheese Sticks 6X2 LB	Breaded	3-1/4"		14-17	*0.29	6/2 lb.	12	13.12	Deep Fry	350	2 to 2-1/2
										Bake—Convection	400	3 / side
										Bake—Conventional	450	4-1/2 / side
80008465	Golden Crisp® 3-1/4" Breaded Mozzarella Cheese Sticks 6X2 LB	Breaded	3-1/4"		14-16	*0.31	6/2 lb.	12	13.07	Deep Fry	350	1-1/2 to 2
80010746	Golden Crisp® Mac & Cheese Wedges 6X3 LB	Battered	NA		17-21	*0.25	6/3 lb.	18	19.42	Deep Fry	350	2-1/4
										Bake—Conventional	450	3-1/2 to 3-3/4 / side
McCain® Grabbitizers™												
96110725	McCain® Grabbitizers™ Battered Cheese Sticks 4X2.5 LB	Battered	3-1/2"		12-17	*0.24	4/2.5 lb.	10	10.92	Deep Fry	350	2-1/2 to 2-3/4
										Bake—Convection	400	4-1/2 to 5 / side
										Bake—Conventional	450	7 to 7-1/2 / side
96110726	McCain® Grabbitizers™ Breaded Cheese Sticks 4X2.5 LB	Breaded	3-1/2"		12-15	*0.26	4/2.5 lb.	10	10.92	Deep Fry	350	2-1/4 to 2-1/2
ONIONS												
Brew City®												
70010013	Brew City® 3/16" Beer Battered Pub Rings 6X2.5 LB	Battered	3/16"		45-75	*0.05	6/2.5 lb.	15	16.47	Deep Fry	350	1-1/2 to 2
										Bake—Convection	450	3 to 4 / side
										Bake—Conventional	450	4 to 5 / side
70010010	Brew City® 3/8" Beer Battered Thin Cut Onion Rings 6X2.5 LB	Battered	3/8"		24-36	*0.10	6/2.5 lb.	15	16.47	Deep Fry	350	2 to 2-1/2
										Bake—Convection	425	2-1/2 / side
										Bake—Conventional	475	5 to 6 / side
1000005935	Brew City® 1/2" Beer Battered IPA Onion Rings 4X2.5 LB	Battered	1/2"		22-30	*0.12	4/2.5 lb.	10	11.06	Deep Fry	350	2 to 2-1/2
										Bake—Convection	425	2 to 2-1/2 / side
										Bake—Conventional	425	10 to 12
70010011	Brew City® 5/8" Beer Battered Thick Cut Onion Rings 6X2.5 LB	Battered	5/8"		16-24	*0.15	6/2.5 lb.	15	16.47	Deep Fry	350	2 to 2-1/2
										Bake—Convection	425	2-1/2 to 3 / side
										Bake—Conventional	425	5 to 6 / side
70010677	Brew City® Black & Tan® 5/8" Beer Battered Onion Rings 6X2 LB	Battered	5/8"		16-24	*0.19	6/2 lb.	12	13.32	Deep Fry	350	2 to 2-1/2
										Bake—Convection	425	2-1/2 to 3 / side
										Bake—Conventional	425	5 to 6 / side
70010009	Brew City® King Rings® Beer Battered Onion Rings 4X2.5 LB	Battered	NA		6-11	*0.37	4/2.5 lb.	10	11.25	Deep Fry	350	2 to 2-1/2
										Bake—Convection	425	3 to 3-1/2 / side
										Bake—Conventional	425	5 to 6 / side
70010517	Brew City® Hot Scoopers® Beer Battered Onion Petals 9X2.5 LB	Battered	NA		48-64	*0.05	9/2.5 lb.	22.5	24.21	Deep Fry	350	2-1/2 to 3
70010012	Brew City® Beer Battered Thin Onion Straws 9X2 LB	Battered	NA		NA	\$0.18 / oz.	9/2 lb.	18	19.61	Deep Fry	350	1-1/2 to 2
										Bake—Convection	450	3 to 4 / side
										Bake—Conventional	450	4 to 5 / side
Moore's®												
40010667	Moore's® Vidalia® 3/8" Battered Onion Rings 4X2.5 LB	Battered	3/8"		20-33	*0.12	4/2.5 lb.	10	11.33	Deep Fry	350	2 to 2-1/2
										Bake—Conventional	400	7 to 8 / side
40010043	Moore's® 3/8" Battered Onion Rings 6X2.5 LB	Battered	3/8"		26-38	*0.08	6/2.5 lb.	15	16.47	Deep Fry	350	2 to 2-1/2
										Bake—Convection	450	2-1/4 / side
										Bake—Conventional	475	5-1/2 / side
40010081	Moore's® 3/8" Breaded Gourmet Onion Rings 9X2 LB	Breaded	3/8"		24-35	*0.09	9/2 lb.	18	21.59	Deep Fry	350	1-1/2 to 2-1/2
40010027	Moore's® 3/8" Breaded Homestyle Onion Rings 12X2.5 LB	Breaded	3/8"		21-27	*0.11	12/2.5 lb.	30	34.38	Deep Fry	350	1-1/2 to 2-1/2
40010533	Moore's® 3/8" Breaded Onion Rings 8X2.5 LB	Breaded	3/8"		21-27	*0.12	8/2.5 lb.	20	23.22	Deep Fry	350	1-1/2 to 2-1/2
40010025	Moore's® 3/8" Breaded White Onion Rings 12X2 LB	Breaded	3/8"		21-30	*0.10	12/2 lb.	24	28.38	Deep Fry	350	2 to 2-1/2
40010048	Moore's® 1/2" Battered Onion Rings 6X2.5 LB	Battered	1/2"		20-25	*0.12	6/2.5 lb.	15	16.61	Deep Fry	350	2 to 2-1/2
										Bake—Convection	450	2-1/4 / side
										Bake—Conventional	475	5-1/2 / side
40003495	Moore's® Bakeables® 1/2" Breaded Onion Rings 4X2.5 LB	Breaded	1/2"		17-21	*0.15	4/2.5 lb.	10	11.10	Bake—Conventional	450	4-1/2 / side
40010679	Moore's® 1/2" Flour Flip™ Onion Rings 4X2.5 LB	Breaded	1/2"		20-26	*0.13	4/2.5 lb.	10	11.10	Deep Fry	350	2-1/2 to 3
40010023	Moore's® 5/8" Breaded Gourmet Onion Rings 12X2 LB	Breaded	5/8"		13-20	*0.17	12/2 lb.	24	28.53	Deep Fry	350	1-1/2 to 2-1/2
40010031	Moore's® 5/8" Breaded Steak Cut Onion Rings 12X2 LB	Breaded	5/8"		13-21	*0.16	12/2 lb.	24	28.54	Deep Fry	350	1-1/2 to 2-1/2
40010021	Moore's® 3/4" Breaded Gourmet Onion Rings 12X2 LB	Breaded	3/4"		11-18	*0.19	12/2 lb.	24	28.56	Deep Fry	350	1-1/2 to 2-1/2
40010016	Moore's® Onion Tanglers® 1/8" Breaded Onion Slivers 6X2 LB	Breaded	1/8"		NA	*0.19/oz.	6/2 lb.	12	13.50	Deep Fry	350	1
										Bake—Convection	400	4-1/4 / side
										Bake—Conventional	400	6-1/2 / side
40010051	Moore's® Battered Onion Petals 9X2.5 LB	Battered	NA		40-55	*0.06	9/2.5 lb.	22.5	24.22	Deep Fry	350	1-1/2 to 2
40010038	Moore's® Onion Twiggs® Battered Onion Straws 9X2 LB	Battered	NA		NA	*0.18/oz.	9/2 lb.	18	19.61	Deep Fry	350	2-1/2
										Bake—Convection	450	2-3/4 / side
										Bake—Conventional	450	4 / side
1000007668	Moore's® Spicy Breaded Onion Straws 6X2 LB	Breaded	NA		NA	*0.20/oz.	6/2 lb.	12	13.37	Deep Fry	350	1-1/2
										Bake—Convection	450	2-3/4 / side
										Bake—Conventional	450	4 / side
40010041	Moore's® Texas Toothpicks® Battered Jalapeño Onion Strips 9X2 LB	Battered	NA		NA	*0.21/oz.	9/2 lb.	18	19.61	Deep Fry	350	1-1/2 to 2
										Bake—Convection	450	2-3/4 / side
										Bake—Conventional	450	15 flip; add 1 5 to 8
40010233	Moore's® Breaded Preformed Onion Rings 8X2 LB	Breaded	NA		28-38	*0.07	8/2 lb.	16	17.58	Deep Fry	350	2 to 2-1/2
										Bake—Conventional	450	5 / side
40010017	Moore's® Breaded Preformed Onion Rings 12X2 LB	Breaded	NA	X	28-34	*0.07	12/2 lb.	24	25.98	Deep Fry	350	1-1/2 to 2-1/2
										Bake—Conventional	450	7-1/2 / side



Product Information					Packaging					Preparation		
Code Number	Product Description	Type	Cut Size	K-12	Piece Ct./Lb.	Est. Piece Cost	Case (lb.)			Cooking Method	Temp (°F)	Time (Minutes)
							Weight	Net	Gross			
ONIONS												
Golden Crisp®												
80010094	Golden Crisp® 1/4" Battered Onion Rings 4X2.5 LB	Battered	1/4"		38-52	¥0.06	4/2.5 lb.	10	11.42	Deep Fry	350	1-1/2 to 2
										Bake–Convection	450	3 / side
										Bake–Conventional	450	6 / side
80010300	Golden Crisp® 1/4" Battered Skinny Cut Onion Rings 4X2.75 LB	Battered	1/4"		34-50	¥0.06	4/2.75 lb.	11	12.14	Deep Fry	350	1-1/2 to 2
										Bake–Conventional	450	6 / side
80010035	Golden Crisp® 1/4" Battered Skinny Cut Onion Rings 4X2.75 LB	Battered	1/4"		35-47	¥0.06	4/2.75 lb.	11	12.25	Deep Fry	350	1-1/2 to 2
										Bake–Convection	450	3 / side
										Bake–Conventional	450	6 / side
80010177	Golden Crisp® 3/8" Battered Skinny Cut Onion Rings 6X2.5 LB	Battered	3/8"		26-34	¥0.08	6/2.5 lb.	15	16.12	Deep Fry	350	2 to 2-1/2
										Bake–Convection	475	3-1/2 / side
										Bake–Conventional	475	4-3/4 / side
80010625	Golden Crisp® 3/8" Breaded Thin Cut Onion Rings 9X2 LB	Breaded	3/8"		25-35	¥0.08	9/2 lb.	18	21.46	Deep Fry	350	2 to 2-1/2
80010074	Golden Crisp® 1/2" Battered Onion Rings 6X2.75 LB	Battered	1/2"		18-26	¥0.12	6/2.75 lb	16.5	17.88	Deep Fry	350	1-3/4 to 2-1/4
										Bake–Conventional	475	7 / side
										Deep Fry	350	2-1/4 to 2-1/2
80010234	Golden Crisp® 5/8" Beer Battered Thick Onion Rings 6X2.5 LB	Battered	5/8"		13-25	¥0.14	6/2.5 lb.	15	16.47	Bake–Convection	425	3 / side
										Bake–Conventional	425	6 / side
										Deep Fry	350	2-1/2 to 3-1/2
80010053	Golden Crisp® Battered Onion Petals 9X2.5 LB	Battered	NA		60-80	¥0.04	9/2.5 lb.	22.5	24.22	Bake–Conventional	475	3-1/2 / side
McCain® Grabbitizers™												
96110848	McCain® Grabbitizers™ Battered Preformed Onion Rings 12X2 LB	Battered	NA	X	25-35	¥0.06	12/2 lb.	24	26.15	Deep Fry	350	1-1/2 to 2-1/2
										Bake–Conventional	450	7-1/2 / side
96110849	McCain® Grabbitizers™ Breaded Preformed Onion Rings 12X2 LB	Breaded	NA	X	28-34	¥0.06	12/2 lb.	24	26.03	Deep Fry	350	1-1/2 to 2
										Bake–Convection	375	3 / side
										Bake–Conventional	400	4 / side
PEPPERS												
Anchor® Poppers®												
1000005427	Anchor® Poppers® Breaded Cheddar Cheese & Bacon Stuffed Jalapeños 4X3 LB	Breaded	NA		12-16	¥0.39	4/3 lb.	12	13.06	Deep Fry	350	4
1000005426	Anchor® Poppers® Breaded Cream Cheese & Bacon Stuffed Jalapeños 4X3 LB	Breaded	NA		12-16	¥0.39	4/3 lb.	12	13.06	Deep Fry	350	4
30010718	Anchor® Fiesta Bold Poppers™ Breaded Cream Cheese Stuffed Jalapeños 2X4 LB	Breaded	NA		12-16	¥0.38	2/4 lb.	8	8.97	Deep Fry	350	3
30005630	Anchor® Poppers® Breaded Original Cheddar Cheese Stuffed Jalapeños 4X4 LB	Breaded	NA		12-16	¥0.36	4/4 lb.	16	17.81	Deep Fry	350	3
30005620	Anchor® Poppers® Breaded Original Cream Cheese Stuffed Jalapeños 4X4 LB	Breaded	NA		12-16	¥0.36	4/4 lb.	16	17.81	Deep Fry	350	3
30007470	Anchor® Poppers® Breaded Red Hot Chile Cream Cheese Stuffed Jalapeños 4X4 LB	Breaded	NA		12-16	¥0.37	4/4 lb.	16	17.81	Deep Fry	350	3
30007975	Anchor® Poppers® Ovenable Breaded Cheddar Cheese Stuffed Jalapeños 6X2 LB	Breaded	NA		12-16	¥0.36	6/2 lb.	12	13.00	Deep Fry	350	5
										Bake–Convection	400	4-1/2 / side
										Bake–Conventional	450	6 / side
30007962	Anchor® Poppers® Ovenable Breaded Cream Cheese Jalapeños 6X2 LB	Breaded	NA		12-16	¥0.36	6/2 lb.	12	13.00	Deep Fry	350	4-3/4
										Bake–Convection	400	4-1/2 / side
										Bake–Conventional	400	7 / side
50010132	Anchor® Poppers® Breaded Cheddar Cheese & Jalapeño Popper® Bites 6X2.5 LB	Breaded	NA		19-25	¥0.23	6/2.5 lb.	15	16.32	Deep Fry	350	2
Anchor®												
50010131	Anchor® Ovenable Breaded Cheddar Cheese & Jalapeño Bites 6X2.5 LB	Breaded	NA		24-34	¥0.15	6/2.5 lb.	15	16.29	Deep Fry	350	3 to 3-1/2
										Bake–Conventional	450	4 to 4-1/2 / side
30011027	Anchor® Breaded Poblano & Jalapeño Popper® Bites 2X4 LB	Breaded	NA		18-26	¥0.22	2/4 lb.	8	8.67	Deep Fry	350	2-1/2
Brew City®												
70010518	Brew City® Beer Battered Jalapeño Bottle Caps® Sliced Jalapeños 6X2.5 LB	Battered	NA		84-132	¥0.03	6/2.5 lb.	15	16.18	Deep Fry	350	2 to 2-1/2
Golden Crisp®												
80008404	Golden Crisp® Breaded Cheddar Cheese Stuffed Jalapeños 4X3 LB	Breaded	NA		12-16	¥0.35	4/3 lb.	12	13.00	Deep Fry	350	3
80008409	Golden Crisp® Breaded Cream Cheese Stuffed Jalapeños 4X3 LB	Breaded	NA		12-16	¥0.33	4/3 lb.	12	13.00	Deep Fry	350	3
80010551	Golden Crisp® Ovenable Breaded Cheddar Cheese Stuffed Jalapeños 6X2 LB	Breaded	NA		12-16	¥0.34	6/2 lb.	12	13.00	Deep Fry	350	5
										Bake–Conventional	450	6 / side
80010550	Golden Crisp® Ovenable Breaded Cream Cheese Stuffed Jalapeños 6X2 LB	Breaded	NA		12-16	¥0.34	6/2 lb.	12	13.00	Deep Fry	350	4-3/4
										Bake–Conventional	450	7 / side
VEGETABLES												
Cauliflower												
50010145	Anchor® Battered Cauliflower 6X3 LB	Battered	NA		35-50	¥0.07	6/3 lb.	18	19.54	Deep Fry	350	2 to 2-1/2
										Bake–Convection	450	3 / side
										Bake–Conventional	450	4-1/2 / side
50010143	Anchor® Breaded Cauliflower 6X3 LB	Breaded	NA		25-58	¥0.07	6/3 lb.	18	19.41	Deep Fry	350	3
80008418	Golden Crisp® Battered Cauliflower 6X2 LB	Battered	NA		30-55	¥0.06	6/2 lb.	12	13.15	Deep Fry	350	3 to 4
										Bake–Conventional	450	5 / side



Product Information					Packaging					Preparation		
Code Number	Product Description	Type	Cut Size	K-12	Piece Ct./Lb.	Est. Piece Cost	Case (lb.)			Cooking Method	Temp (°F)	Time (Minutes)
							Weight	Net	Gross			
Corn												
1000002784	Anchor® Battered Spicy Jalapeño Cheddar Corn Nuggets 4X3 LB	Battered	NA		23-27	¥0.14	4/3 lb.	12	13.04	Deep Fry	350	3-1/2
										Bake—Convection	450	7
										Bake—Conventional	450	11
80008428	Golden Crisp® Battered Sweet Corn Nuggets 6X2 LB	Battered	NA		30-36	¥0.07	6/2 lb.	12	13.13	Deep Fry	350	3
										Bake—Convection	450	7
										Bake—Conventional	450	10
Green Beans												
50010917	Anchor® Battered Crispy Green Beans 4X2 LB	Battered	NA		52-110	¥0.04	4/2 lb.	8	9.06	Deep Fry	350	1-3/4
										Bake—Conventional	450	5 / side
Mushrooms												
50010141	Anchor® Battered Mushrooms 6X2.5 LB	Battered	NA		20-36	¥0.11	6/2.5 lb.	15	16.20	Deep Fry	350	3-1/4
50010156	Anchor® Breaded Garlic Mushrooms 4X4 LB	Breaded	NA		18-34	¥0.12	4/4 lb.	16	17.29	Deep Fry	350	2-1/2 to 3-1/2
50010138	Anchor® Breaded Mushrooms 6X2.5 LB	Breaded	NA		18-34	¥0.12	6/2.5 lb.	15	16.32	Deep Fry	350	2-3/4 to 3-1/4
50010460	Anchor® Breaded Mushrooms 6X3 LB	Breaded	NA		19-35	¥0.12	6/3 lb.	18	19.47	Deep Fry	350	2-1/2 to 3-1/2
70004012	Brew City® Beer Battered Mushrooms 8X2.5 LB	Battered	NA		19-37	¥0.12	8/2.5 lb.	20	21.52	Deep Fry	350	3 to 3-1/2
80010169	Golden Crisp® Battered Button Mushrooms 3X2.2 LB	Battered	NA		24-40	¥0.10	3/2.2 lb.	6.6	7.17	Deep Fry	350	3-1/2 to 4
80008375	Golden Crisp® Battered Mushroom Halves 6X2 LB	Battered	NA		35-60	¥0.06	6/2 lb.	12	13.09	Deep Fry	350	3-1/2 to 4-1/2
										Bake—Conventional	450	6 / side
80008473	Golden Crisp® Battered Whole Mushrooms 6X2 LB	Battered	NA		24-40	¥0.12	6/2 lb.	12	13.15	Deep Fry	350	3-1/2 to 4-1/2
										Bake—Conventional	450	6 / side
80008439	Golden Crisp® Breaded Homestyle Whole Mushrooms 6X2 LB	Breaded	NA		19-35	¥0.11	6/2 lb.	12	13.09	Deep Fry	350	2-1/2 to 3-1/2
96110724	McCain® Grabitizers™ Breaded Mushrooms 6X2 LB	Breaded	NA		20-32	¥0.09	6/2 lb.	12	13.09	Deep Fry	350	3-1/4
Pickles												
1000005137	Anchor® 3/8" Battered Spicy Pickle Fries 4X3 LB	Battered	NA		50-95	¥0.06	4/3 lb.	12	13.16	Deep Fry	350	2-1/4
50010153	Anchor® Breaded Dill Pickle Spears 4X4 LB	Breaded	NA		11-15	¥0.25	4/4 lb.	16	17.40	Deep Fry	350	2 to 2-1/2
										Deep Fry	350	2-1/2 to 3-1/2
										Bake—Convection	475	5 to 6 / side
70003188	Brew City® Beer Battered Spicy Pub Pickles 6X2.5 LB	Battered	NA		10-18	¥0.24	6/2.5 lb.	15	16.36	Bake—Conventional	475	6 to 7 / side
										Bake—Conventional	475	6 to 7 / side
80010911	Golden Crisp® Breaded Original Pickle Chips 6X2.5 LB	Breaded	NA		41-64	¥0.08	6/2.5 lb.	15	16.40	Deep Fry	350	2 to 2-1/2
Zucchini												
50010151	Anchor® Battered Zucchini Sticks 6X2.5 LB	Battered	NA		22-36	¥0.09	6/2.5 lb.	15	16.36	Deep Fry	350	3
										Bake—Convection	450	4 / side
										Bake—Conventional	450	6 / side
50010149	Anchor® Breaded Zucchini Slices 6X2.5 LB	Breaded	NA		18-34	¥0.10	6/2.5 lb.	15	16.36	Deep Fry	350	3
50005800	Anchor® Italian Breaded Zucchini Sticks 4X3.5 LB	Breaded	NA		21-36	¥0.09	4/3.5 lb.	14	15.37	Deep Fry	350	3
70004011	Brew City® Beer Battered Zucchini Slices 8X3 LB	Battered	NA		18-36	¥0.11	8/3 lb.	24	25.60	Deep Fry	350	3 to 3-1/2
										Bake—Convection	450	5 to 6 / side
										Bake—Conventional	450	6 to 9 / side
80008455	Golden Crisp® Battered Zucchini Sticks 6X2 LB	Battered	2-1/12 X 5		20-34	¥0.10	6/2 lb.	12	12.93	Deep Fry	350	3 to 3-1/2
										Bake—Conventional	450	5 / side
SPECIALTIES												
Anchor®												
57510424	Anchor® Spin Dippers® Spinach & Artichoke Specialty Dip 36X6 OZ	NA	NA		NA	NA	36/6 oz.	13.5	15.00	Microwave	NA	2 to 2-1/2
Golden Crisp®												
80004319	Golden Crisp® Breaded Italian Cheese Ravioli 6X3 LB	Breaded	NA		16-20	¥0.23	6/3 lb.	18	19.45	Deep Fry	350	2-1/2 to 3
										Bake—Convection	450	5 / side
										Bake—Conventional	450	6 / side
McCain® Grabitizers™												
1000001261	McCain® Grabitizers™ Battered Whole Wheat French Toast Sticks 5X2 LB	Battered	NA	X	18-22	¥0.12	5/2 lb.	10	11.43	Deep Fry	350	1-1/2 to 2
										Bake—Convection	375	5 / side
										Bake—Conventional	475	4 to 5 / side
96110844	McCain® Grabitizers™ Battered French Toast Sticks 5X2 LB	Battered	NA		16-19	¥0.14	5/2 lb.	10	11.28	Deep Fry	350	2-1/2
										Bake—Convection	375	4 / side
										Bake—Conventional	400	5 / side
96110846	McCain® Grabitizers™ Battered Southern Style Hushpuppies 6X2 LB	Battered	NA		23-30	¥0.06	6/2 lb.	12	13.13	Deep Fry	350	2-1/2
										Bake—Convection	375	3-1/2 / side
										Bake—Conventional	400	5-1/2 / side
McCain® Wrappetizers™												
37510419	McCain® Wrappetizers™ Santa Fe Chicken Eggrolls 1X15 LB	NA	NA		5-6	¥0.93	1/15 lb.	15	16.85	Deep Fry	350	10-1/2
										Bake—Conventional	350	27
37508170	McCain® Wrappetizers™ Mesquite Chicken Quesadilla Rolls 4X4 LB	NA	NA		9-10	¥0.58	4/4 lb.	16	17.93	Bake—Convection	400	5 / side, low fan
										Bake—Conventional	450	6 / side





BRING GUESTS TO THE TABLE. BRING SUCCESS TO YOUR DOOR.

Every day, you've got a lot on your plate. Every day,
Insiders Club™ can help. Sign up for help with:



Consumer Insights

Find out what's happening in the market to create a menu that reflects the trends driving consumer satisfaction and purchase.



The Customizer Live™

Promote your menu with mouthwatering food imagery and custom POS.



Servingware

Show off your food with servingware that brings theater to presentation.



Culinary Ideas

Spark your imagination with profitable, on-trend menu ideas.



Earned Rewards and Rebates

Earn up to \$600 cash back when you buy both potato and appetizer products—plus get exclusive support like how-to guides and social media kits. Visit McCainUSAFoodservice.com/Insiders/



Contact McCain Foods anytime to bring it all together.
800-767-7377

McCainUSAFoodservice.com